

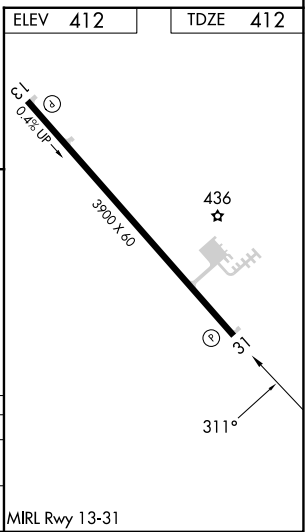
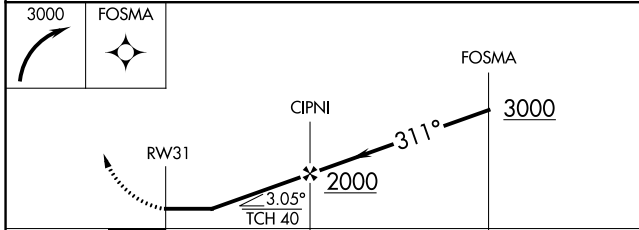
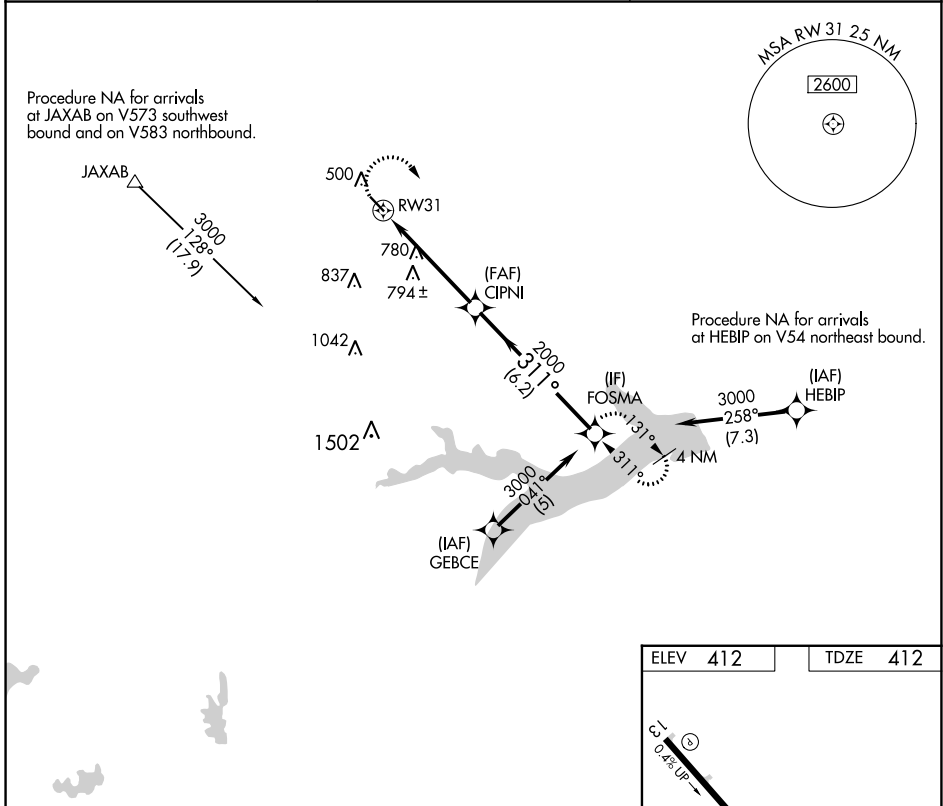
APP CRS 311°	Rwy Idg 3900
	TDZE 412
	Apt Elev 412

RNAV (GPS) RWY 31

FRANKLIN COUNTY (F53)

RNP APCH.	<p>⚠ Circling Rwy 13 NA at night. Rwy 31 helicopter visibility reduction below 3/4 SM NA. ⚠ NA Use Mount Pleasant Rgnl altimeter setting; when not received, procedure NA.</p>	MISSED APPROACH: Climbing right turn to 3000 direct FOSMA and hold.
-----------	---	---

OSA AWOS-3 119.775	FORT WORTH CENTER 132.025 360.75	UNICOM 123.0 (CTAF)
------------------------------	--	-------------------------------



CATEGORY	A	B	C	D
LNVA MDA	1160-1 748 (800-1)	1160-1 1/4 748 (800-1 1/4)	NA	
CIRCLING	1160-1 748 (800-1)	1160-1 1/4 748 (800-1 1/4)	NA	

SC-2, 28 NOV 2024 to 26 DEC 2024

SC-2, 28 NOV 2024 to 26 DEC 2024