

WAAS CH 69233 W02A	APP CRS 021°	Rwy Idg TDZE Apt Elev	5917 4967 4970
--	------------------------	-----------------------------	---

RNAV (GPS) RWY 2

CLAYTON MUNI AIRPARK (CAO)

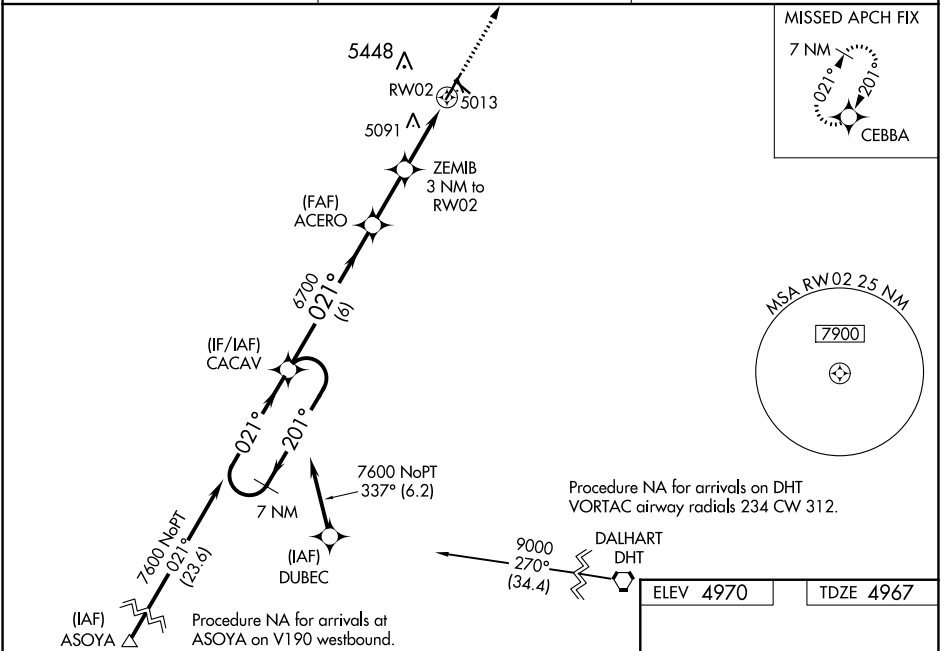
⚠ For uncompensated Baro-VNAV systems, LNAV/VNAV NA below -1.6°C (4°F) or above 54°C (130°F). Circling NA west of Rwy 2-20. DME/DME RNP-0.3 NA. When local altimeter setting not received, use Dalhart altimeter setting and increase all DA 227 feet and all MDA 240 feet, increase LPV all Cats visibility $\frac{3}{8}$ mile, increase LNAV/VNAV all Cats visibility $1\frac{1}{8}$ mile, increase LNAV Cat C visibility $\frac{5}{8}$ mile, and increase Circling Cat C visibility $\frac{1}{2}$ mile. Baro-VNAV NA when using Dalhart altimeter setting. VDP NA with Dalhart altimeter setting.

MISSED APPROACH: Climb to 8000 direct CEBBA and hold, continue climb-in-hold to 8000.

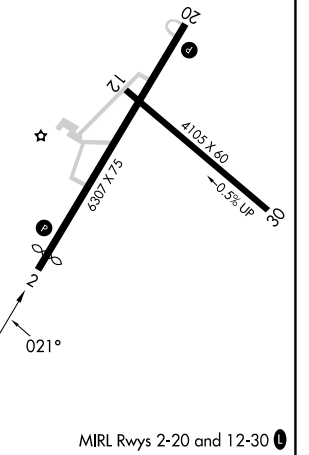
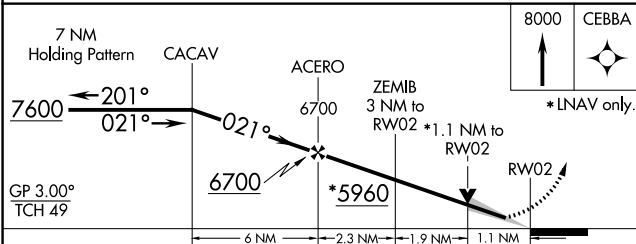
ASOS
120.625

ALBUQUERQUE CENTER
127.85 285.475

UNICOM
122.8 (CTAF) 0



ELEV 4970 | TDZE 4967



CATEGORY	A	B	C	D
LPV DA	5217- $\frac{3}{4}$		250 (300- $\frac{3}{4}$)	NA
LNAV/VNAV DA	5367-1 $\frac{3}{8}$		400 (400-1 $\frac{3}{8}$)	NA
LNAV MDA	5360-1	393 (400-1)	5360-1 $\frac{1}{8}$ 393 (400-1 $\frac{1}{8}$)	NA
C CIRCLING	5360-1 390 (400-1)	5420-1 450 (500-1)	5420-1 $\frac{1}{2}$ 450 (500-1 $\frac{1}{2}$)	NA

MIRL Rwy 2-20 and 12-30 0