

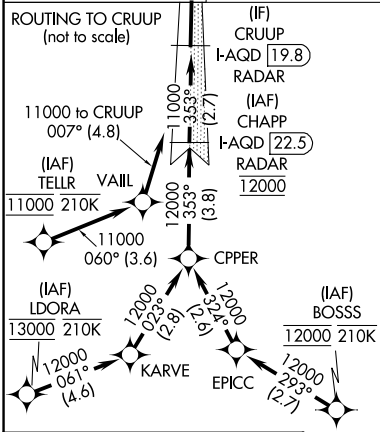
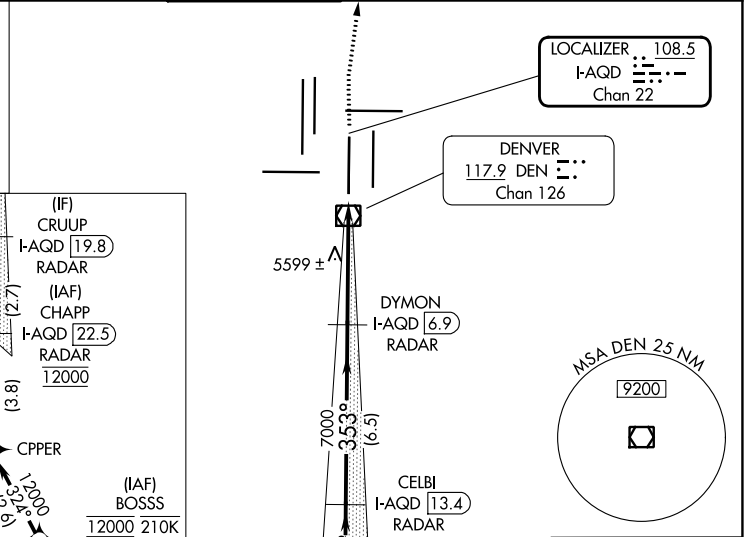
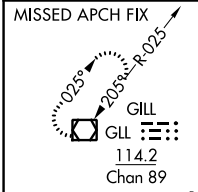
LOC/DME I-AQD <b>108.5</b> Chan <b>22</b>	APP CRS <b>353°</b>	Rwy Idg <b>12000</b> TDZE <b>5434</b> Apt Elev <b>5434</b>
---	------------------------	--

# ILS RWY 35L (SA CAT I)

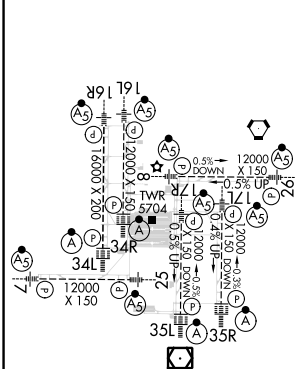
DENVER INTL (DEN)

RNAV 1-GPS or RADAR required for procedure entry.		ALS-F2 	MISSED APPROACH: Climb to 10000 then right turn direct GLL VOR/DME and hold.	
▽ Simultaneous approach authorized. Requires specific OPSPEC, MSPEC, or LOA approval and use of HUD to DH.				

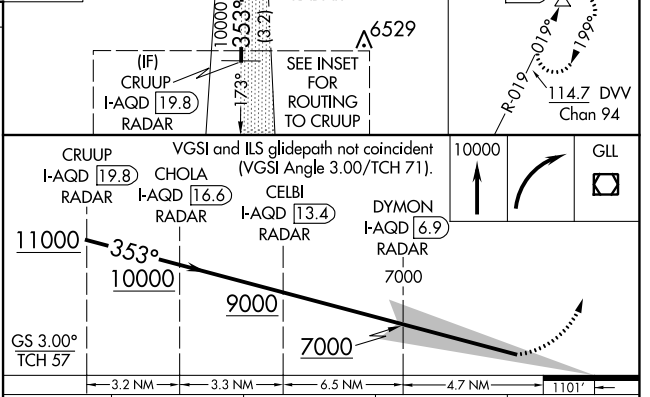
D-ATIS <b>125.6 379.9</b> (ARR) <b>134.025</b> (DEP)	DENVER APP CON <b>119.3 307.3</b> (N) <b>120.35 379.3</b> (S)	DENVER TOWER <b>124.3 322.45</b>	GND CON <b>121.35 379.175</b> (W) <b>121.85 377.1</b> (E)	CLNC DEL <b>118.75</b>	CPDLC
--	---	-------------------------------------	---	---------------------------	-------



ELEV 5434	<b>D</b>	TDZE 5434
-----------	----------	-----------



HIRL all Rwys  
TDZ/CL Rwys 7, 16L, 16R, 17R, 26, 34L, 34R, 35L, 35R



CATEGORY	A	B	C	D
S-ILS 35L	RA 165/14 150 DA 5584			

**SA CATEGORY I ILS - SPECIAL AIRCREW & AIRCRAFT CERTIFICATION REQUIRED**

SW-1, 28 NOV 2024 to 26 DEC 2024

SW-1, 28 NOV 2024 to 26 DEC 2024