

LOC/DME I-LTT 111.1 Chan 48	APP CRS 173°	Rwy Idg TDZE Apt Elev	12000 5357 5434
---	------------------------	-----------------------------	--

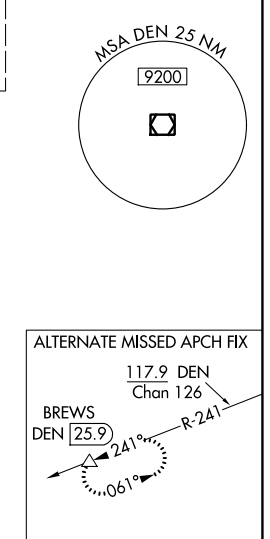
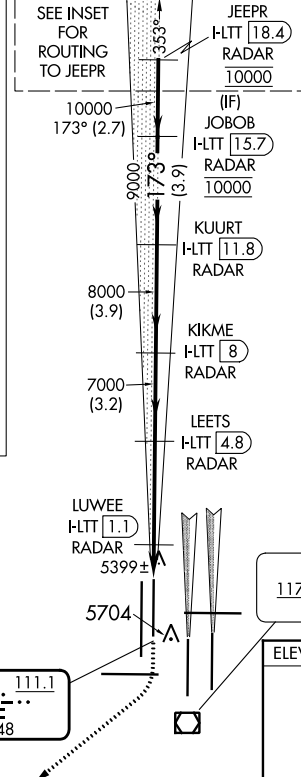
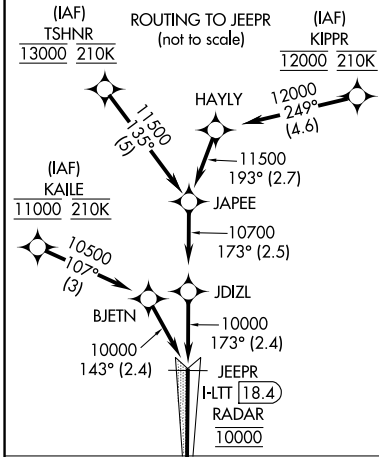
ILS or LOC RWY 16L

DENVER INTL (DEN)

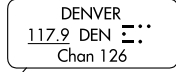
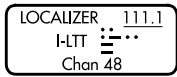
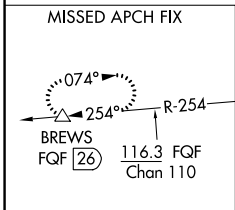
Simultaneous approach authorized with Rwy 17L/17R. DME required. S-LOC 16L DME or RADAR required. For inoperative MALSR, increase S-LOC Cat C/D visibility to RVR 4500.

MALSRR MISSED APPROACH: Climb to 5900 then climbing right turn to 12000 on heading 218° and on FGF VORTAC R-254 to BREWS/FQF 26 DME and hold.

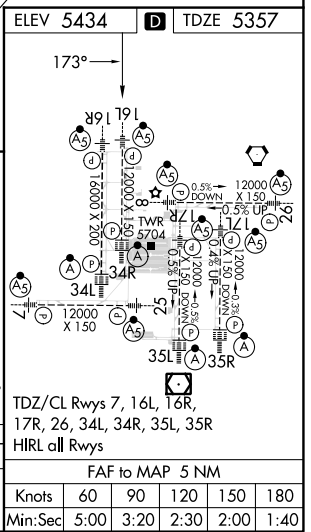
D-ATIS 125.6 379.9 (ARR) 134.025 (DEP)	DENVER APP CON 119.3 307.3 (N) 120.35 379.3 (S)	DENVER TOWER 135.3 351.95	GND CON 121.35 379.175 (W) 121.85 377.1 (E)	CLNC DEL 118.75	CPDLC
--	---	-------------------------------------	---	---------------------------	-------



RADAR or GPS REQUIRED



5900 ↑	12000 hdg 218°	FQF R-254	BREWS △	VGSI and ILS glidepath not coincident (VGSI Angle 3.00/TCH 71).
*LOC only	I-LTT 0.2	LUYEE I-LTT 1.1 RADAR	LEETS I-LTT 4.8 RADAR	KIKME I-LTT 8 RADAR
	H-LTT 0.6	7000	7000	8000
	0.8	0.5	3.7 NM	3.2 NM
			3.9 NM	3.9 NM
				2.7 NM
CATEGORY	A	B	C	D
S-ILS 16L	5557/18 200 (200-½)			
S-LOC 16L	5660/24 303 (300-½)			



SW-1, 28 NOV 2024 to 26 DEC 2024

SW-1, 28 NOV 2024 to 26 DEC 2024