

LOC/DME I-OUF 111.1 Chan 48	APP CRS 353°	Rwy Idg TDZE 5354 Apt Elev 5434
---	------------------------	---

ILS or LOC RWY 34R

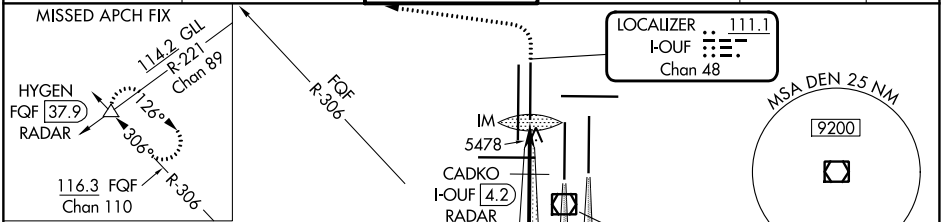
DENVER INTL (DEN)

▼ S-LOC 34R DME or RADAR required. Simultaneous approach authorized with Rwy 35L/R. For inoperative ALSF, increase S-LOC Cat C/D visibility to RVR 5500.

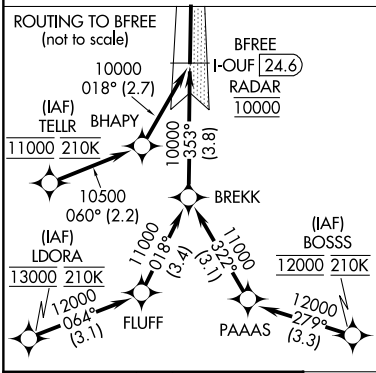
ALSF-2 

MISSED APPROACH: Climb to 5800 then climbing left turn to 10000 on heading 270° and on FQF VORTAC R-306 to HYGEN/FQF 37.9 DME/RADAR and hold.

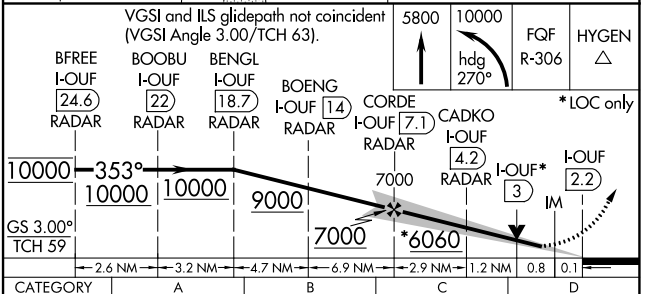
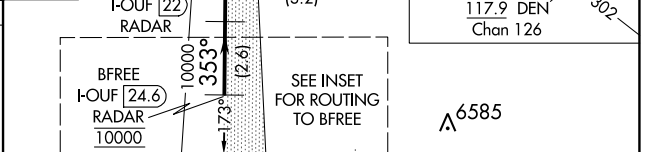
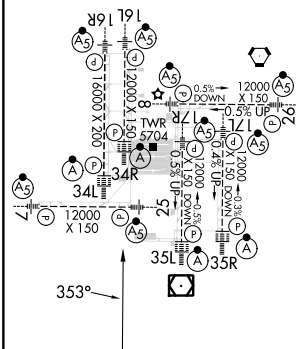
D-ATIS 125.6 379.9 (ARR) 134.025 (DEP)	DENVER APP CON 119.3 307.3 (N) 120.35 379.3 (S)	DENVER TOWER 135.3 351.95	GND CON 121.35 379.175 (W) 121.85 377.1 (E)	CLNC DEL 118.75	CPDLC
--	---	-------------------------------------	---	---------------------------	-------



RADAR or GPS REQUIRED



ELEV 5434	D	TDZE 5354
TDZ/CL Rwy's 7, 16L, 16R, 17R, 26, 34L, 34R, 35L, 35R		
HIRL all Rwy's		



FAF to MAP 5 NM					
Knots	60	90	120	150	180
Min:Sec	5:00	3:20	2:30	2:00	1:40
S-ILS 34R	5554/18			200 (200-½)	
S-LOC 34R	5700/24		346 (300-½)		5700/30
					346 (300-¾)

SW-1, 28 NOV 2024 to 26 DEC 2024

SW-1, 28 NOV 2024 to 26 DEC 2024