

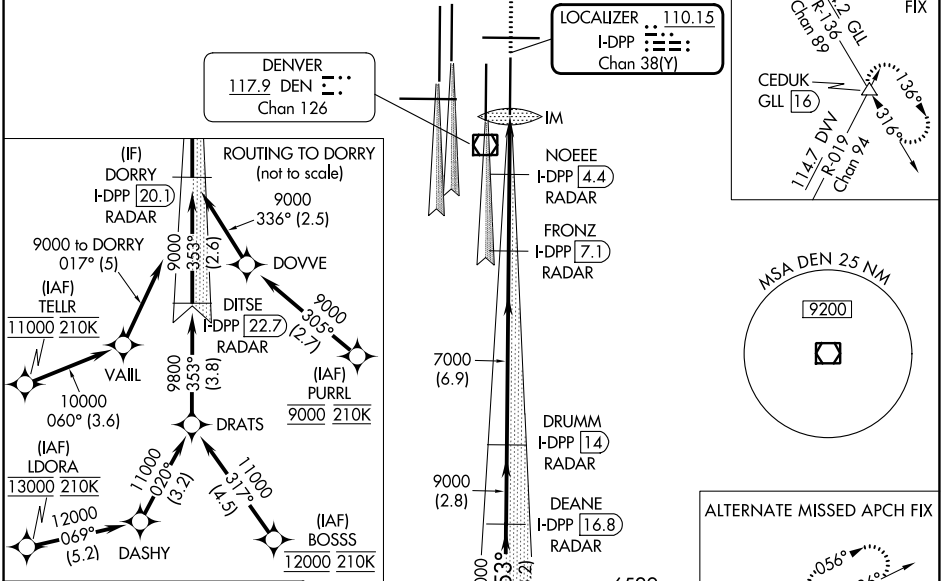
LOC/DME I-DPP 110.15 Chan 38(Y)	APP CRS 353°	Rwy Idg 12000 TDZE 5370 Apt Elev 5434
---	------------------------	--

ILS or LOC RWY 35R

DENVER INTL (DEN)

<p>▽ S-LOC 35R DME or RADAR required. Simultaneous approach authorized with Rwy 34L, Rwy 34R, and Rwy 35L.</p>	ALSF-2 (A)	MISSED APPROACH: Climb to 5800 then climbing right turn to 10000 on heading 048° and on GLL VORTAC R-136 to CEDUK/GLL 16 DME and hold.			
D-ATIS 125.6 379.9 (ARR) 134.025 (DEP)	DENVER APP CON 119.3 307.3 (N) 120.35 379.3 (S)	DENVER TOWER 132.35 239.275	GND CON 121.35 379.175 (W) 121.85 377.1 (E)	CLNC DEL 118.75	CPDLC

RADAR or GPS REQUIRED

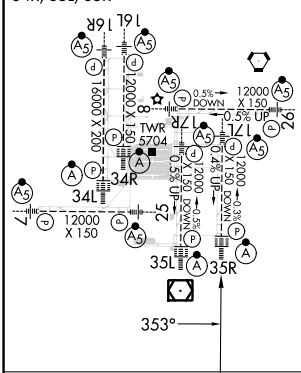


SW-1, 28 NOV 2024 to 26 DEC 2024

SW-1, 28 NOV 2024 to 26 DEC 2024

ELEV 5434	D	TDZE 5370
-----------	----------	-----------

HIRL all Rwy's
TDZ/CL Rwy's 7, 16L, 16R, 17R, 26, 34L, 34R, 35L, 35R



FAF to MAP 4.9 NM					
Knots	60	90	120	150	180
Min:Sec	4:54	3:16	2:27	1:58	1:38



VGSi and ILS glidepath not coincident (VGSi Angle 3.00/TCH 66).				5800	10000	GLL	CEDUK
				↑	hdg 048°	R-136	△
				* LOC only			
DORRY I-DPP 20.1 RADAR				DEANE I-DPP 16.8 RADAR	DRUMM I-DPP 14 RADAR	FRONZ I-DPP 7.1 RADAR	NOEEE I-DPP 4.4 RADAR
9000				353°	9000	9000	7000
GS 3.00°				TCH 59	*6120		
→ 3.2 NM				→ 2.8 NM	→ 6.9 NM	→ 2.7 NM	→ 1.3 NM
CATEGORY				A	B	C	D
S-ILS 35R				5570/18 200 (200-½)			
S-LOC 35R				5740/24 370 (400-½)		5740/35 370 (400-⅝)	