

ILS or LOC RWY 7

DENVER INTL (DEN)

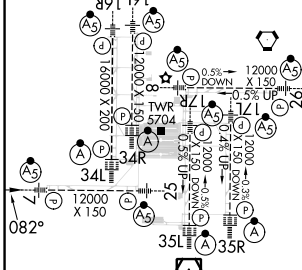
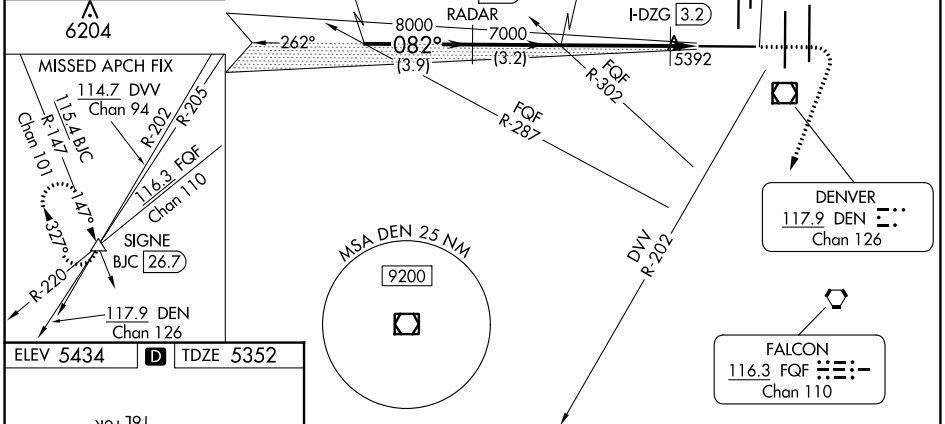
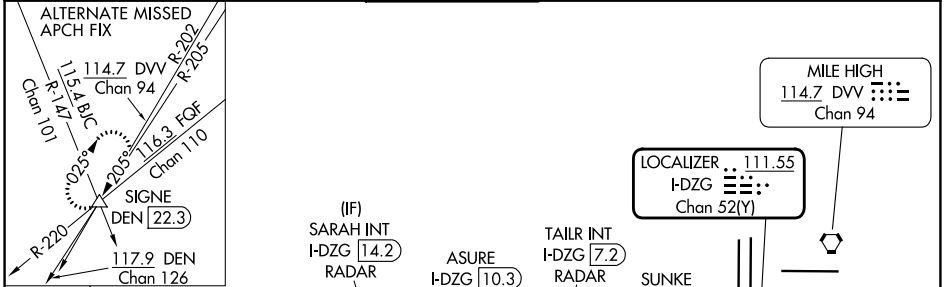
LOC/DME I-DZG 111.55 Chan 52(Y)	APP CRS 082°	Rwy ldg 12000 TDZE 5352 Apt Elev 5434
---	------------------------	--

RADAR required for procedure entry.
 For improved ALS, increase SUNKE fix Cat C/D visibility to RVR 4500. Simultaneous approach authorized.

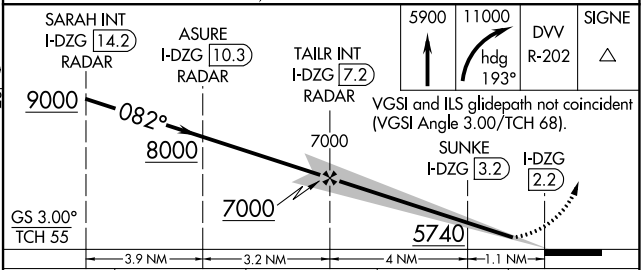


MISSED APPROACH: Climb to 5900 then climbing right turn to 11000 on heading 193° and on DVV VORTAC R-202 to SIGNE INT/BJC 26.7 DME and hold. Continue climb-in-hold to 11000.

D-ATIS 125.6 379.9 (ARR) 134.025 (DEP)	DENVER APP CON 119.3 307.3 (N) 120.35 379.3 (S)	DENVER TOWER 128.75 273.55	GND CON 121.35 379.175 (W) 121.85 377.1 (E)	CLNC DEL 118.75	CPDLC
--	---	--------------------------------------	---	---------------------------	-------



ELEV 5434	D	TDZE 5352
TDZ/CL Rwy 7, 16L, 16R, 17R, 26, 34L, 34R, 35L, 35R HIRL all Rwys FAF to MAP 5 NM Knots: 60 90 120 150 180 Min:Sec: 5:00 3:20 2:30 2:00 1:40		



CATEGORY	A	B	C	D
S-ILS 7	5552/18 200 (200-½)			
S-LOC 7	5740/24 388 (400-½)	5740/35 388 (400-⅝)		
SUNKE FIX MINIMUMS				
S-LOC 7	5660/24 308 (300-½)			

SW-1, 28 NOV 2024 to 26 DEC 2024

SW-1, 28 NOV 2024 to 26 DEC 2024