


LOC/DME I-FUI 108.9 Chan 26	APP CRS 083°	Rwy Idg 12000 TDZE 5354 Apt Elev 5434
--	------------------------	--

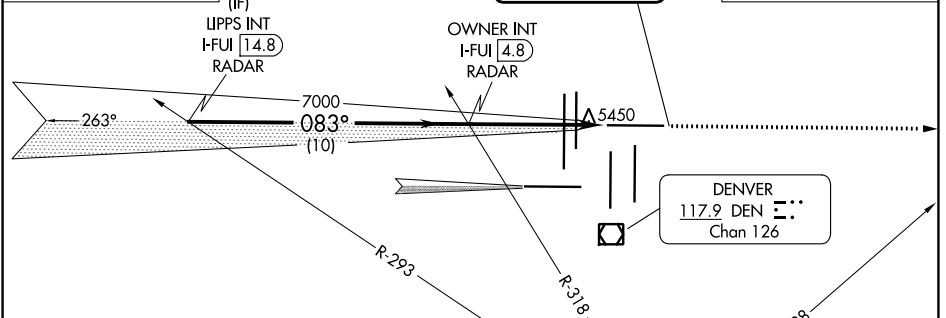
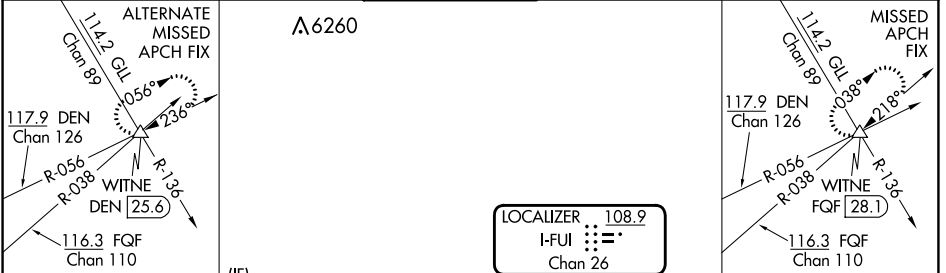
ILS or LOC RWY 8

DENVER INTL (DEN)

Simultaneous approach authorized with Rwy 7. For inoperative MALSR, increase S-LOC 8 Cat C/D visibility to RVR 5500.
 ** RVR 1800 authorized with use of FD or AP or HUD to DA.

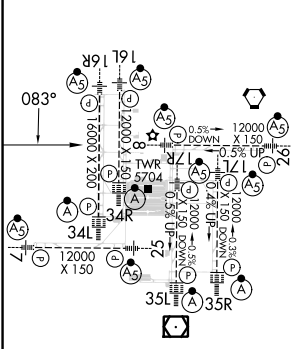
MALSR  MISSED APPROACH: Climb to 10000 on heading 083° and on FGF VORTAC R-038 to WITNE INT/FQF 28.1 DME and hold.

D-ATIS 125.6 379.9 (ARR) 134.025 (DEP)	DENVER APP CON 119.3 307.3 (N) 120.35 379.3 (S)	DENVER TOWER 132.35 239.275	GND CON 121.35 379.175 (W) 121.85 377.1 (E)	CLNC DEL 118.75	CPDLC
--	---	---------------------------------------	---	---------------------------	-------



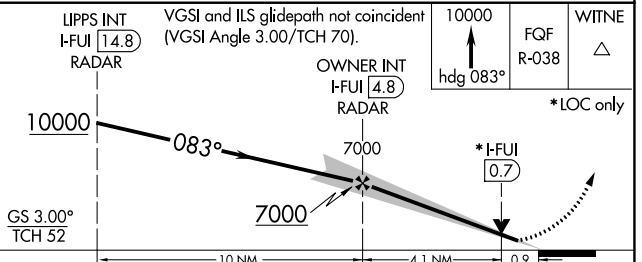
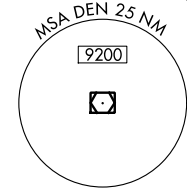
RADAR REQUIRED

ELEV 5434	D	TDZE 5354
-----------	----------	-----------



TDZ/CL Rwy 7, 16L, 16R, 17R, 26, 34L, 34R, 35L, 35R
HIRL all Rwy

FAF to MAP 5 NM					
Knots	60	90	120	150	180
Min:Sec	5:00	3:20	2:30	2:00	1:40



GS 3.00° TCH 52	10 NM	4.1 NM	0.9	
CATEGORY	A	B	C	D
S-ILS 8**	5554/24 200 (200-½)			
S-LOC 8	5700/24	346 (300-½)	5700/30	346 (300-⅝)

SW-1, 28 NOV 2024 to 26 DEC 2024

SW-1, 28 NOV 2024 to 26 DEC 2024