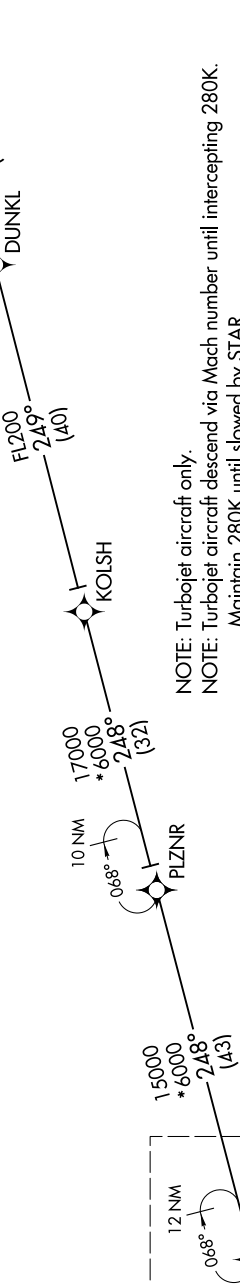
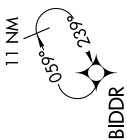


# LAWGR THREE ARRIVAL (RNAV) Transition Routes

SW-1, 28 NOV 2024 to 26 DEC 2024

DENVER APP CON  
124.95 346.4  
D-ATIS ARR  
125.6 379.9  
DENVER TOWER  
128.75 273.55 (Rwy 7-25)  
132.35 239.275 (Rwys 8-26, 17L-35R)  
124.3 322.45 (Rwy 17R-35L)  
135.3 351.95 (Rwys 16L-34R, 16R-34L)



- NOTE: Turbojet aircraft only.  
NOTE: Turbojet aircraft descend via Mach number until intercepting 280K. Maintain 280K until slowed by STAR.  
NOTE: Denver Center will issue "descend via" clearance and landing direction.  
NOTE: Landing north select Rwy 35R transition.  
NOTE: Landing south select Rwy 17R transition.  
NOTE: Landing east select Rwy 7 transition.  
NOTE: Landing west select Rwy 26 transition.  
NOTE: Expect runway assignment on initial contact with Denver TRACON.

RNAV 1 - DME/DME/IRU or GPS  
RADAR required for non-GPS equipped aircraft

BRWRY TRANSITION (BRWRY.LAWGR3)

(CONTINUED ON FOLLOWING PAGE)

NOTE: Chart not to scale.

SW-1, 28 NOV 2024 to 26 DEC 2024