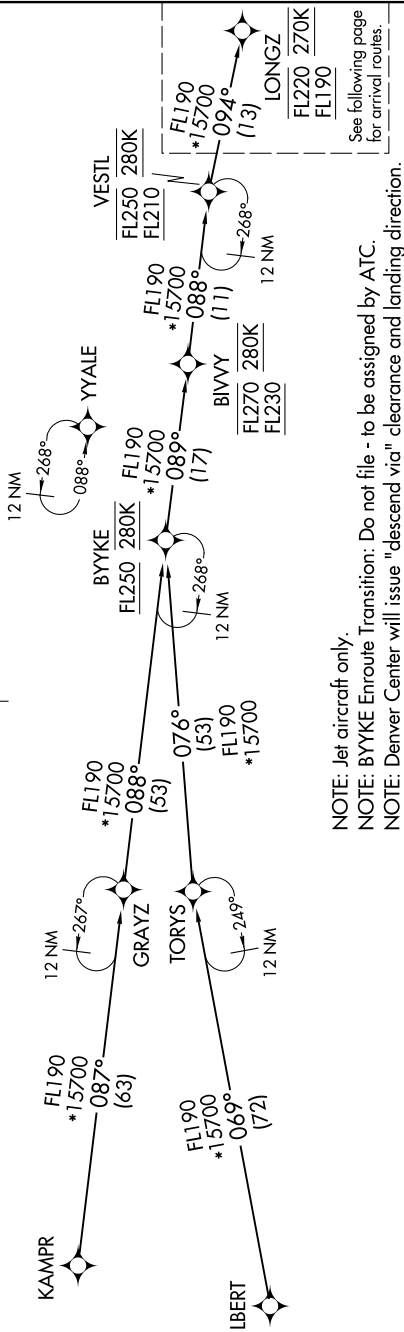


# LONGZ THREE ARRIVAL (RNAV) Transition Routes

SW-1, 28 NOV 2024 to 26 DEC 2024

RNAV 1 - DME/DME/IRU or GPS.  
RADAR required.

- DENVER APP CON  
119.3 307.3
- D-ATIS ARR  
125.6 379.9
- DENVER TOWER  
128.75 273.55 (Rwy 7-25)
- 132.35 239.275 (Rwys 8-26, 17L-35R)
- 124.3 322.45 (Rwy 17R-35L)
- 135.3 351.95 (Rwys 16L-34R, 16R-34L)



- NOTE: Jet aircraft only.  
 NOTE: BYYKE Enroute Transition: Do not file - to be assigned by ATC.  
 NOTE: Denver Center will issue "descend via" clearance and landing direction.  
 NOTE: Landing North select Rwy 34R Transition.  
 NOTE: Landing South select Rwy 16R Transition.  
 NOTE: Landing East select Rwy 7 Transition.  
 NOTE: Landing West select Rwy 26 Transition.  
 NOTE: Expect runway assignment on initial contact with Denver TRACON.

BYYKE TRANSITION (BYYKE.LONGZ3)  
KAMPR TRANSITION (KAMPR.LONGZ3)  
LBERT TRANSITION (LBERT.LONGZ3)

(CONTINUED ON FOLLOWING PAGE)

NOTE: Chart not to scale.

SW-1, 28 NOV 2024 to 26 DEC 2024