


APP CRS	Rwy Idg	12000
173°	TDZE	5357
	Apt Elev	5434

RNAV (RNP) Z RWY 16L

DENVER INTL (DEN)

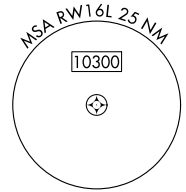
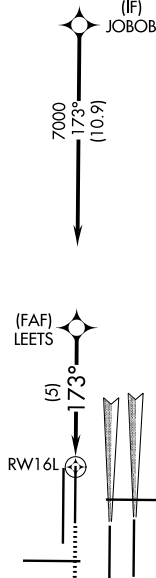
▼ For uncompensated Baro-VNAV systems, procedure NA below -25°C (-13°F) or above 45°C (114°F). GPS required. For inoperative MALSR, increase RNP 0.10 all Cats visibility to RVR 4000 and RNP 0.30 all Cats visibility to RVR 5000. Simultaneous approach authorized. Use of FD or AP providing RNAV track guidance required during simultaneous operations.

MALSR  MISSED APPROACH: Climb to 5900 then climbing right turn to 10000 direct BINBE and hold, continue climb-in-hold to 10000.

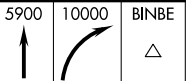
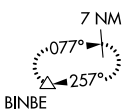
D-ATIS 125.6 379.9 (ARR) 134.025 (DEP)	DENVER APP CON 119.3 307.3 (N) 120.35 379.3 (S)	DENVER TOWER 135.3 351.95	GND CON 121.35 379.175 (W) 121.85 377.1 (E)	CLNC DEL 118.75	CPDLC
--	---	-------------------------------------	---	---------------------------	-------

RADAR REQUIRED

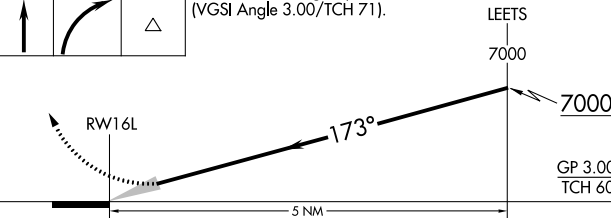
Λ 6260



MISSED APCH FIX

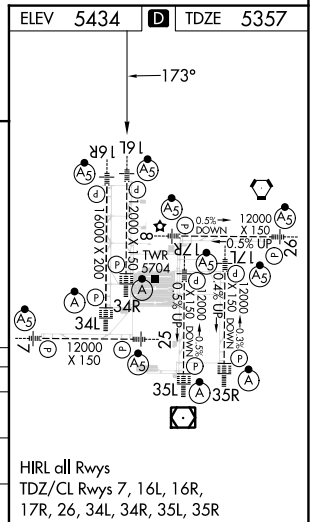


VGSI and RNAV glidepath not coincident (VGSI Angle 3.00/TCH 71).



CATEGORY	A	B	C	D
RNP 0.10 DA	5617/24		260 (200-½)	
RNP 0.30 DA	5683/32		326 (300-¾)	

AUTHORIZATION REQUIRED



HIRL all Rwys
TDZ/CL Rwys 7, 16L, 16R,
17R, 26, 34L, 34R, 35L, 35R