


APP CRS 173°	Rwy Idg 12000 TDZE 5339 Apt Elev 5434
------------------------	--

RNAV (RNP) Z RWY 17L

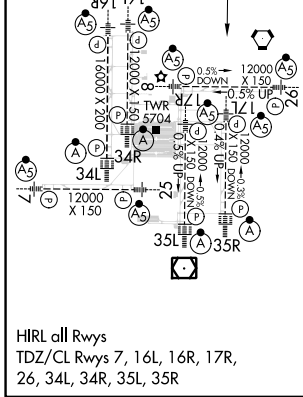
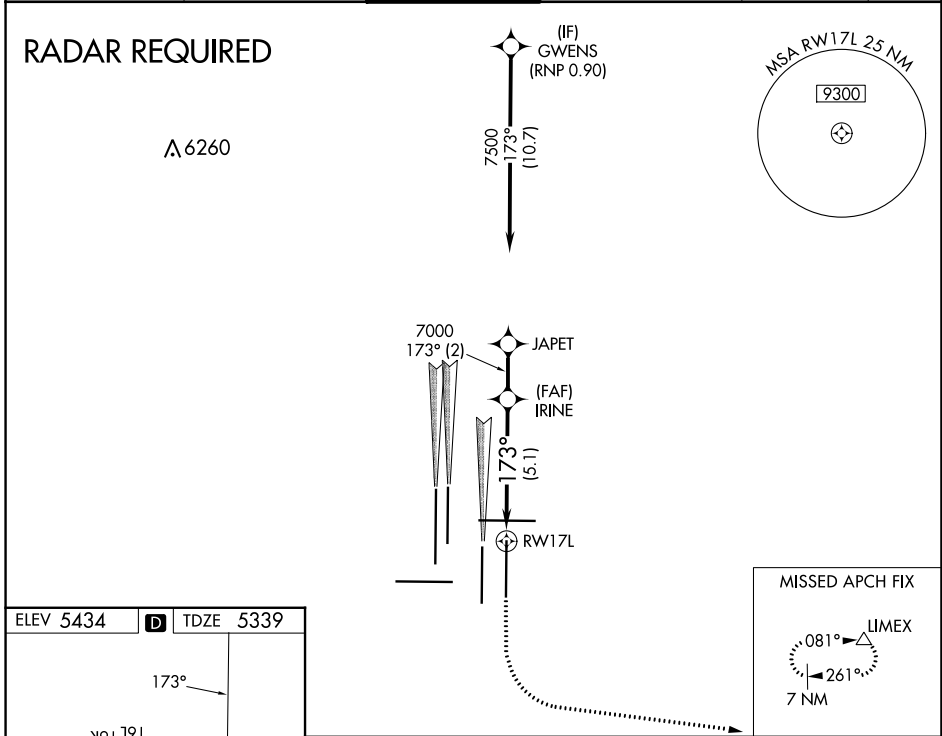
DENVER INTL (DEN)

▼ GPS required. For inoperative MALSR, increase RNP 0.10 all Cats visibility to RVR 4500 and RNP 0.30 all Cats visibility to RVR 6000. Simultaneous approach authorized. Use of FD or AP providing RNAV track guidance required during simultaneous operations. For uncompensated Baro-VNAV systems, procedure NA below -25°C (-13°F) or above 48°C (118°F).

MALSR


MISSED APPROACH: Climb to 5900 then climbing left turn to 10000 direct LIMEX and hold.

D-ATIS 125.6 379.9 (ARR) 134.025 (DEP)	DENVER APP CON 119.3 307.3 (N) 120.35 379.3 (S)	DENVER TOWER 132.35 239.275	GND CON 121.35 379.175 (W) 121.85 377.1 (E)	CLNC DEL 118.75	CPDLC
--	---	---------------------------------------	---	---------------------------	-------



5900	10000	LIMEX	VGSI and RNAV glidepath not coincident (VGSI Angle 3.00/TCH 66).	JAPET
RWY 17L		IRINE	7000	7500
		5.1 NM	2 NM	GP 3.00° TCH 48
CATEGORY	A	B	C	D
RNP 0.10 DA	5600/24 261 (200-½)			
RNP 0.30 DA	5716/40 377 (300-¾)			
AUTHORIZATION REQUIRED				

SW-1, 28 NOV 2024 to 26 DEC 2024

SW-1, 28 NOV 2024 to 26 DEC 2024