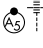


| | |
|------------------------|-------------------------|
| APP CRS 173° | Rwy Idg 12000 |
| | TDZE 5392 |
| | Apt Elev 5434 |

RNAV (RNP) Z RWY 17R

DENVER INTL (DEN)

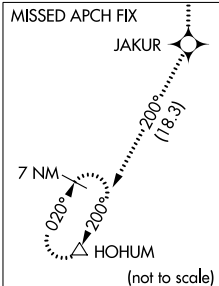
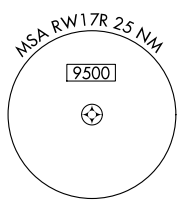
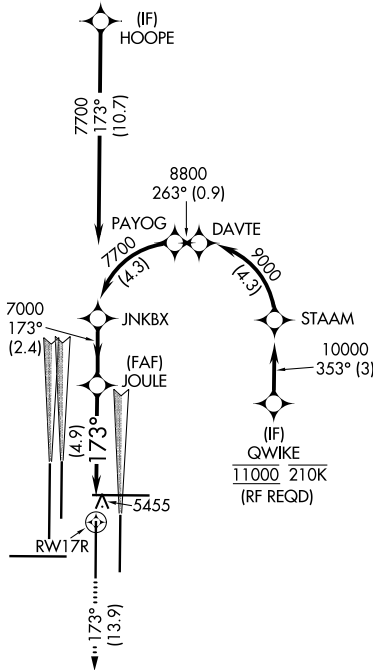
▽ GPS required. For inoperative MALSR, increase RNP 0.10 all Cats visibility to RVR 5000 and RNP 0.30 all Cats visibility to 1 1/2 miles. Simultaneous approach authorized. Use of FD or AP providing RNAV track guidance required during simultaneous operations. For uncompensated Baro-VNAV systems, procedure NA below -25°C (-13°F) or above 45°C (114°F).

MALSR

MISSED APPROACH: Climb to 10000 on track 173° to JAKUR and on track 200° to HOHUM and hold.

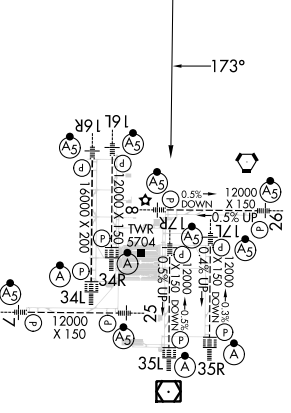
| | | | | | |
|--|---|-------------------------------------|---|---------------------------|-------|
| D-ATIS 125.6 379.9 (ARR) 134.025 (DEP) | DENVER APP CON 119.3 307.3 (N) 120.35 379.3 (S) | DENVER TOWER 124.3 322.45 | GND CON 121.35 379.175 (W) 121.85 377.1 (E) | CLNC DEL 118.75 | CPDLC |
|--|---|-------------------------------------|---|---------------------------|-------|

RADAR REQUIRED

A 6260



| | | |
|-----------|----------|-----------|
| ELEV 5434 | D | TDZE 5392 |
|-----------|----------|-----------|



HIRL all Rwys
 TDZ/CL Rwys 7, 16L, 16R, 17R,
 26, 34L, 34R, 35L, 35R

| | | | | | | | |
|---|-------------------------|---------|-------|---------|------|--|-------|
| 10000 | JAKUR | tr 173° | HOHUM | tr 200° | △ | VGSI and RNAV glidepath not coincident (VGSI Angle 3.00°/TCH 69°). | JNKBX |
| See planview for multiple IF locations. | | | | | | | JNKBX |
| | | RWY 17R | | JOULE | 7000 | 173° | 7700 |
| | | | | 7000 | | GP 3.00° TCH 60 | |
| | | 4.9 NM | | 2.4 NM | | | |
| CATEGORY | A | B | C | D | | | |
| RNP 0.10 DA | 5722/32 330 (300-5/8) | | | | | | |
| RNP 0.30 DA | 5894/60 502 (500-1 1/4) | | | | | | |

AUTHORIZATION REQUIRED

SW-1, 28 NOV 2024 to 26 DEC 2024

SW-1, 28 NOV 2024 to 26 DEC 2024