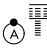


RNAV (RNP) Z RWY 34R

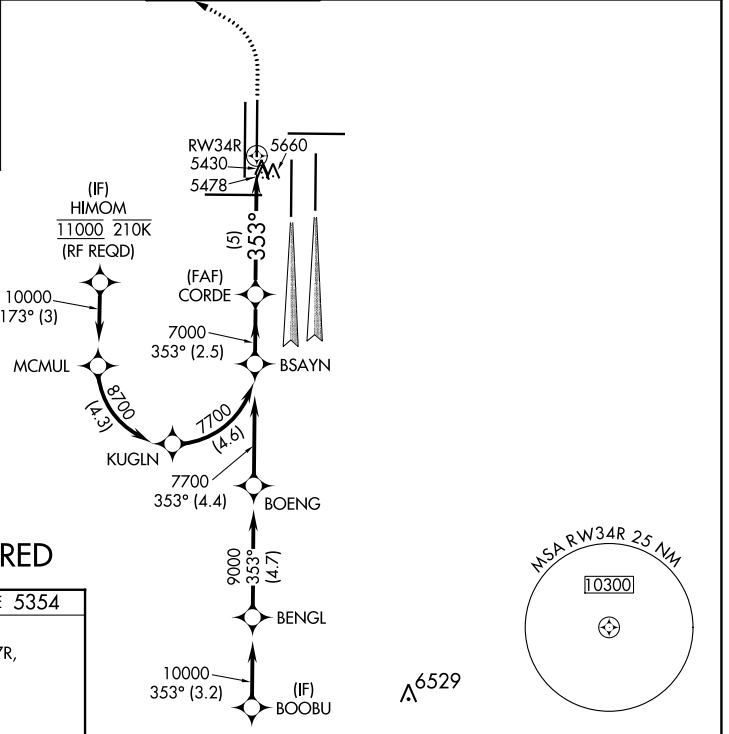
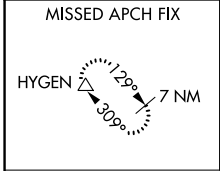
DENVER INTL (DEN)

APP CRS 353°	Rwy Idg 12000 TDZE 5354 Apt Elev 5434
------------------------	--

▼ For uncompensated Baro-VNAV systems, procedure NA below -25°C (-13°F) or above 46°C (114°F). GPS required. For inoperative ALSF, increase RNP 0.10 all Cats visibility to RVR 6000 and RNP 0.20 all Cats visibility to 1½ mile and RNP 0.30 all Cats visibility to 2¼ mile. Simultaneous approach authorized. Use of FD or AP providing RNAV track guidance required during simultaneous operations.

ALSF-2

MISSED APPROACH:
 Climb to 6000 then climbing left turn to 10000 direct HYGEN and hold.

D-ATIS 125.6 379.9 (ARR) 134.025 (DEP)	DENVER APP CON 119.3 307.3 (N) 120.35 379.3 (S)	DENVER TOWER 135.3 351.95	GND CON 121.35 379.175 (W) 121.85 377.1 (E)	CLNC DEL 118.75	CPDLC
--	---	-------------------------------------	---	---------------------------	-------



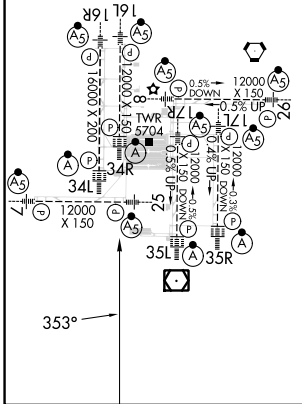
SW-1, 28 NOV 2024 to 26 DEC 2024

SW-1, 28 NOV 2024 to 26 DEC 2024

RADAR REQUIRED

ELEV 5434	D	TDZE 5354
-----------	----------	-----------

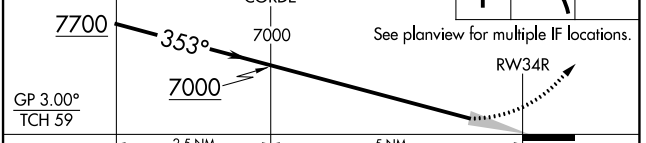
HIRL all Rwys
 TDZ/CL Rwys 7, 16L, 16R, 17R, 26, 34L, 34R, 35L, 35R



VGSI and RNAV glidepath not coincident (VGSI Angle 3.00/TCH 63).

6000	10000	HYGEN
↑	↙	△

See planview for multiple IF locations.



CATEGORY	A	B	C	D
RNP 0.10 DA	5739/40 385 (400-¾)			
RNP 0.20 DA	5849/60 495 (500-1¼)			
RNP 0.30 DA	5980-1½ 626 (600-1½)			

AUTHORIZATION REQUIRED