

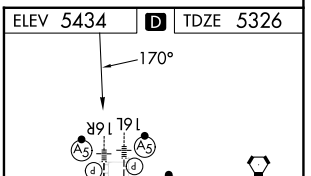
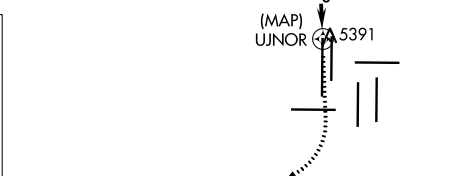
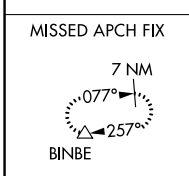
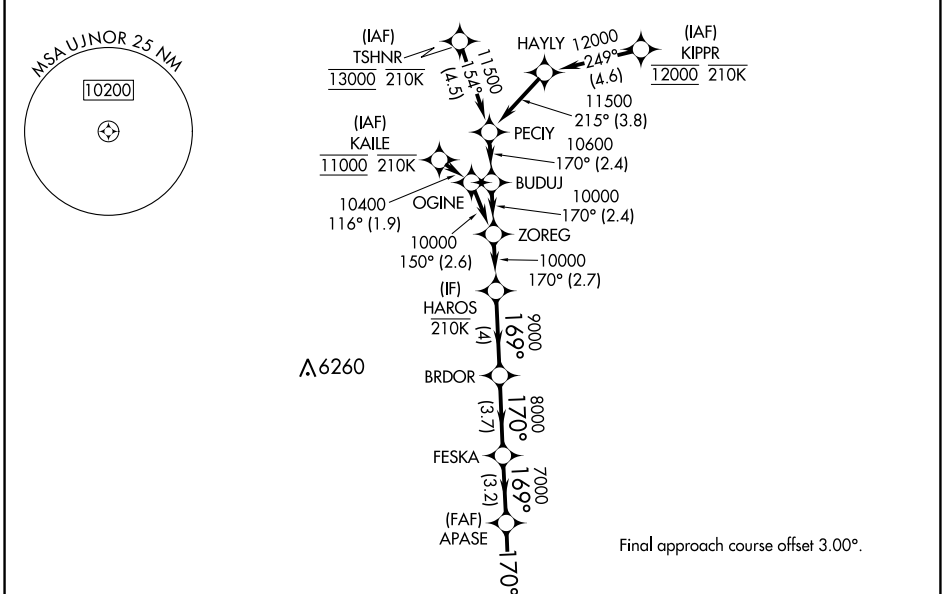
WAAS CH 53546 W16B	APP CRS 170°	Rwy Idg 16000 TDZE 5326 Apt Elev 5434
--	------------------------	--

RNAV (GPS) Y RWY 16R

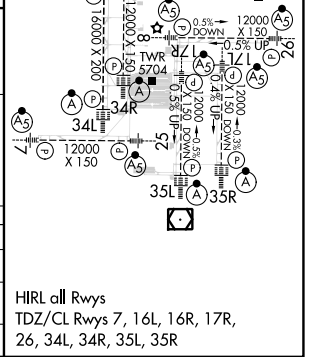
DENVER INTL (DEN)

RNP APCH - GPS.	MALSR	MISSED APPROACH: Climb to 5900, then climbing right turn to 10000 direct BINBE and hold, continue climb-in-hold to 10000.
<p>▼ LNAV procedure NA during simultaneous operations. For uncompensated Baro-VNAV systems, LNAV/VNAV NA below -24°C or above 54°C. Use of FD or AP required during simultaneous operations. For inop ALS, increase LNAV/VNAV all Cats visibility to RVR 4000. Simultaneous approach authorized.</p>		

D-ATIS 125.6 379.9 (ARR) 134.025 (DEP)	DENVER APP CON 119.3 307.3 (N) 120.35 379.3 (S)	DENVER TOWER 135.3 351.95	GND CON 121.35 379.175 (W) 121.85 377.1 (E)	CLNC DEL 118.75	CPDLC
--	---	-------------------------------------	---	---------------------------	-------



HAROS		VGSi and RNAV glidepath not coincident (VGSi Angle 3.00/TCH 71).			5900	10000	BINBE
BRDOR		FESKA			APASE		
10000	9000	8000	7000	7000	0.8 NM to UJNOR		
GP 3.00°		TCH 55					
4 NM		3.7 NM	3.2 NM	4.3 NM	0.8		
CATEGORY	A	B	C	D			
LPV DA	5576/24		250 (200-½)				
LNAV/VNAV DA	5582/24		256 (200-½)				
LNAV MDA	5660/24	334 (300-½)	5660/26	334 (300-½)			



SW-1, 28 NOV 2024 to 26 DEC 2024

SW-1, 28 NOV 2024 to 26 DEC 2024