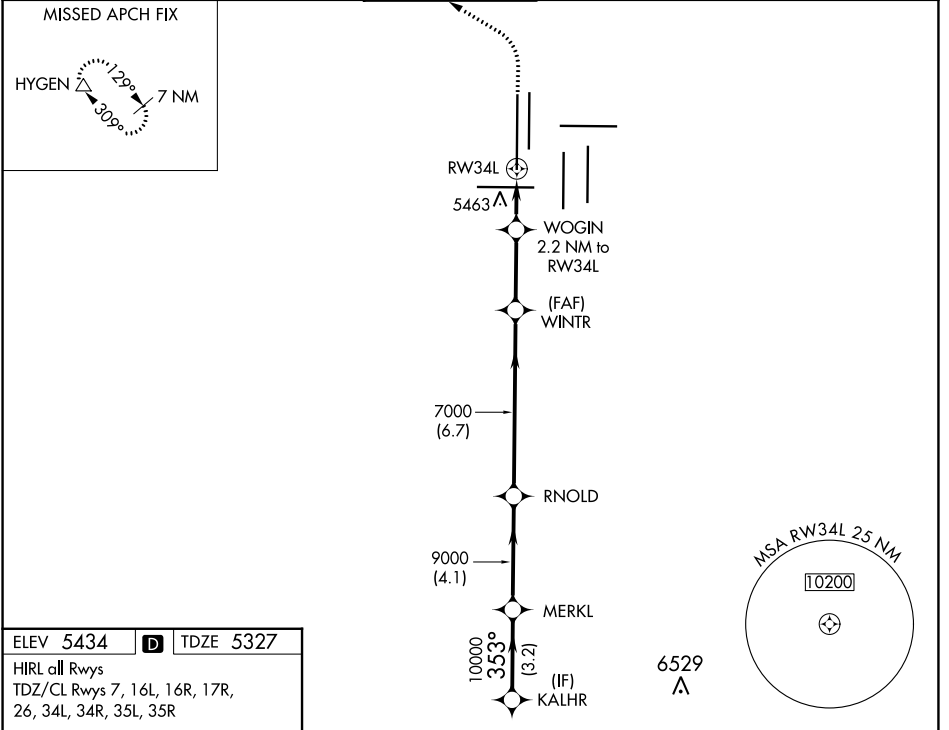


|  |                        |  |
|--|------------------------|--|
| WAAS<br>CH <b>45619</b><br><b>W34A</b> | APP CRS<br><b>353°</b> | Rwy Idg <b>16000</b><br>TDZE <b>5327</b><br>Apt Elev <b>5434</b> |
|--|------------------------|--|

# RNAV (GPS) Y RWY 34L

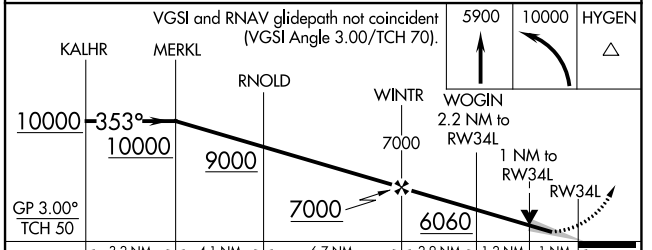
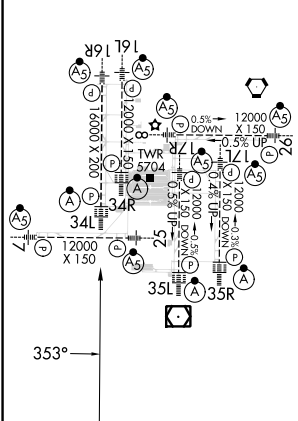
DENVER INTL (DEN)

|   |   |                                     |   |  |       |
|---|---|-------------------------------------|---|--|-------|
| RNP APCH-GPS.   |   | ALSF-2                              |   | MISSED APPROACH: Climb to 5900 then climbing left turn to 10000 direct HYGEN and hold. |       |
| <p>▼ LNAV procedure NA during simultaneous operations. Use of FD or AP required during simultaneous operations. Simultaneous approach authorized with Rwy 35L/R. For uncompensated Baro-VNAV systems, LNAV/VNAV NA below -22°C or above 54°C.</p> |   |                                     |   |  |       |
| D-ATIS<br><b>125.6 379.9</b> (ARR)<br><b>134.025</b> (DEP)  | DENVER APP CON<br><b>119.3 307.3</b> (N)<br><b>120.35 379.3</b> (S) | DENVER TOWER<br><b>135.3 351.95</b> | GND CON<br><b>121.35 379.175</b> (W)<br><b>121.85 377.1</b> (E) | CLNC DEL<br><b>118.75</b>  | CPDLC |



|           |          |           |
|-----------|----------|-----------|
| ELEV 5434 | <b>D</b> | TDZE 5327 |
|-----------|----------|-----------|

HIRL all Rwys  
TDZ/CL Rwys 7, 16L, 16R, 17R,  
26, 34L, 34R, 35L, 35R



|              |         |             |             |             |
|--------------|---------|-------------|-------------|-------------|
| CATEGORY     | A       | B           | C           | D           |
| LPV DA       | 5527/18 |             | 200 (100-½) |             |
| LNAV/VNAV DA | 5663/26 |             | 336 (300-½) |             |
| LNAV MDA     | 5720/24 | 393 (300-½) | 5720/35     | 393 (300-¾) |