

APP CRS 354°	Rwy Idg 4006
	TDZE 527
	Apt Elev 527

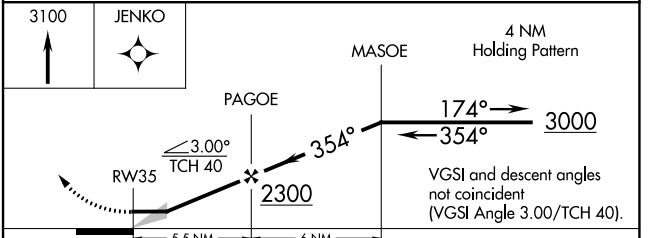
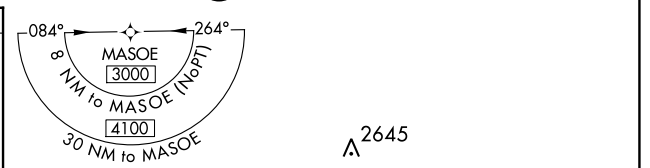
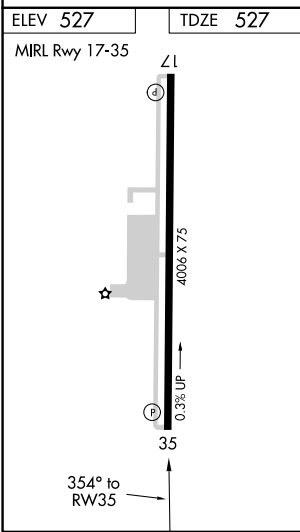
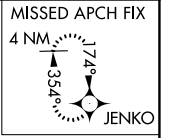
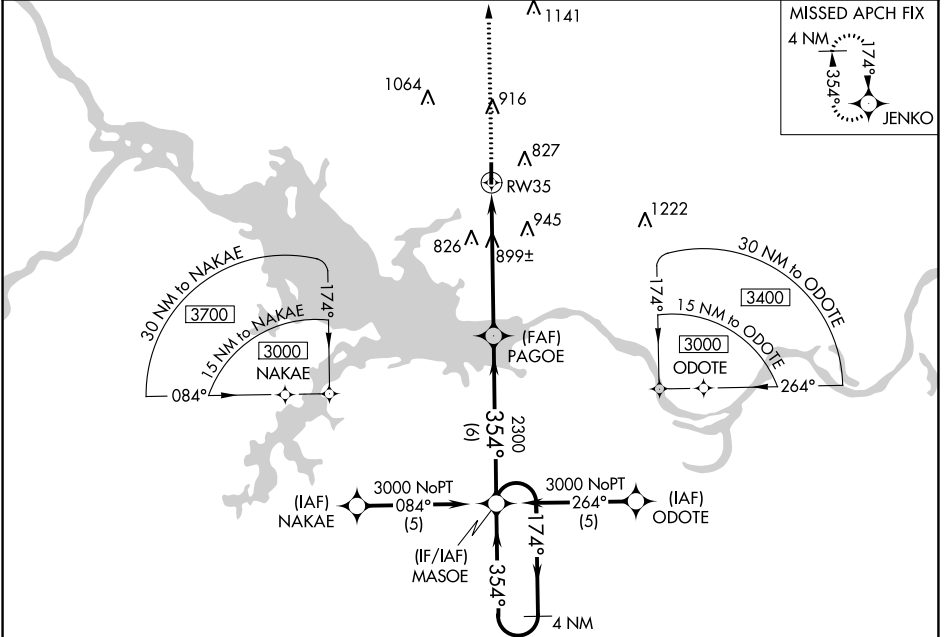
RNAV (GPS) RWY 35

SALLISAW MUNI (JSV)

▽ DME/DME RNP-0.3 NA. Night landing: Rwy 17 NA.
▲ NA Helicopter visibility reduction below ¾ SM NA.

MISSED APPROACH: Climb to 3100
 direct JENKO WP and hold.

AWOS-3 118.475	RAZORBACK APP CON * 120.9 343.75	UNICOM 122.7 (CTAF)
--------------------------	--------------------------------------------	-------------------------------



CATEGORY	A	B	C	D
LNAV MDA	1160-1 633 (700-1)		1160-1¾ 633 (700-1¾)	NA
CIRCLING	1160-1 633 (700-1)		1300-2¼ 773 (800-2¼)	NA

SC-1, 28 NOV 2024 to 26 DEC 2024

SC-1, 28 NOV 2024 to 26 DEC 2024