

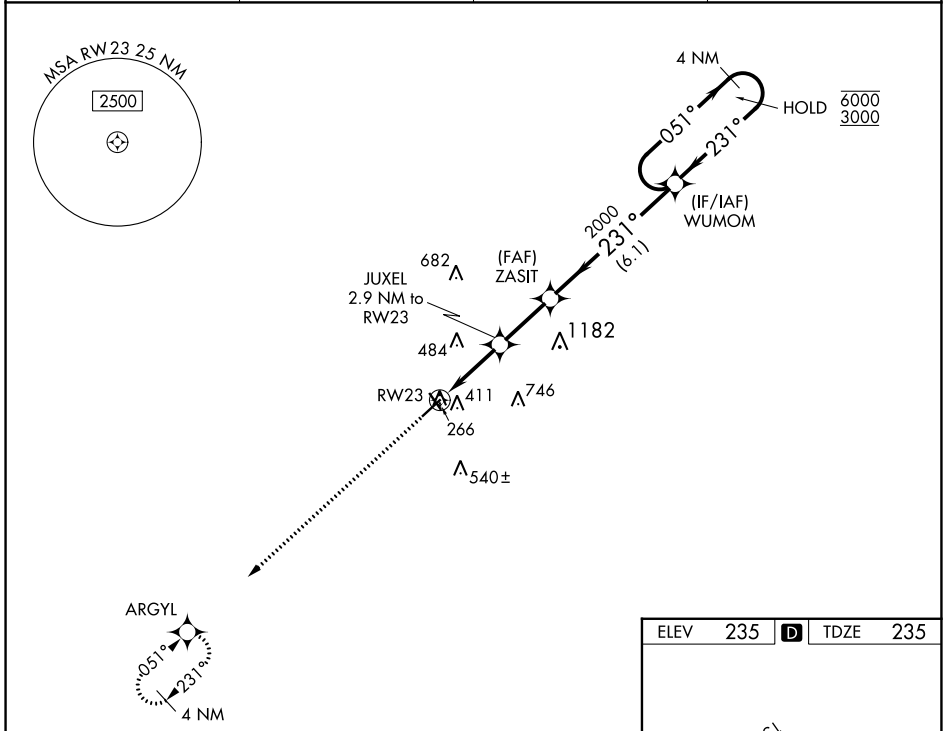
WAAS CH 81833 W23A	APP CRS 231°	Rwy Idg 5501 TDZE 235 Apt Elev 235
--	------------------------	---

RNAV (GPS) RWY 23

COOK COUNTY (15J)

RNP APCH - GPS.	<p>Procedure NA at night. Rwy 23 helicopter visibility reduction below 1 SM NA. Baro-VNAV NA. Use Moultrie Muni altimeter setting.</p>	MISSED APPROACH: Climb to 3000 direct ARGYL and hold, continue climb-in-hold to 3000.
-----------------	--	---

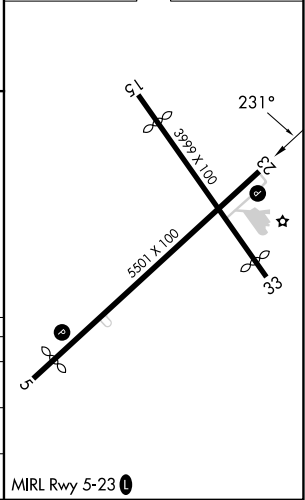
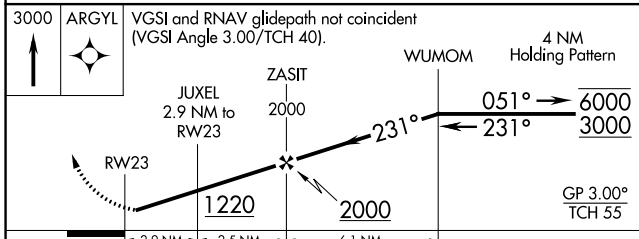
AWOS-3PT 118.025	MGR AWOS-3PT 118.925	VALDOSTA APP CON★ 126.6 285.6	UNICOM 122.8 (CTAF)
----------------------------	--------------------------------	---	-------------------------------



SE-4, 28 NOV 2024 to 26 DEC 2024

SE-4, 28 NOV 2024 to 26 DEC 2024

ELEV	235	D	TDZE	235
------	-----	---	------	-----



CATEGORY	A	B	C	D
LPV DA	595-1	360 (400-1)		
LNAV/VNAV DA	694-1 ³ / ₈	459 (500-1 ³ / ₈)		
LNAV MDA	700-1	465 (500-1)	700-1 ³ / ₈	465 (500-1 ³ / ₈)