

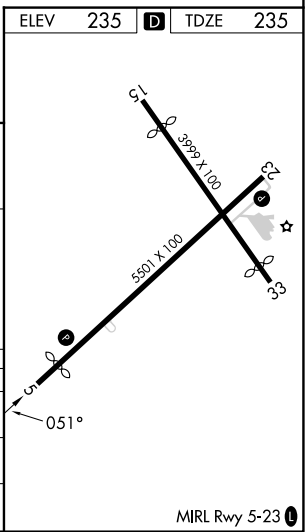
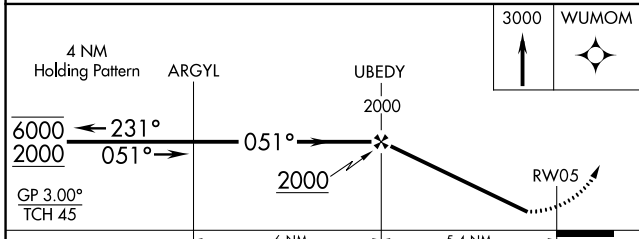
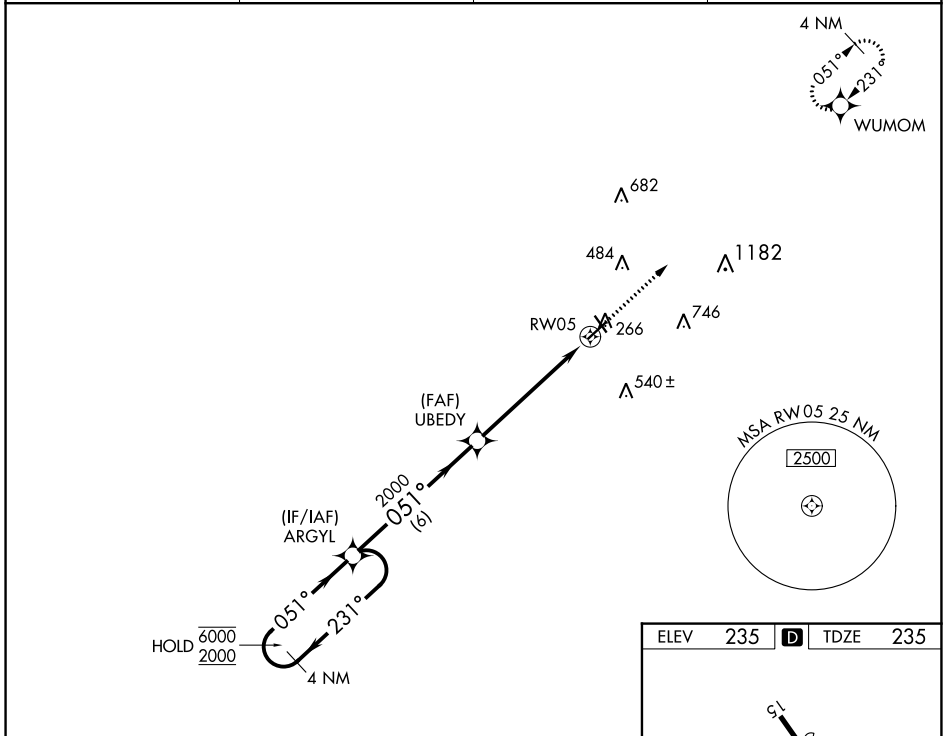
WAAS CH 42506 W05A	APP CRS 051°	Rwy Idg TDZE Apt Elev	5000 235 235
--	------------------------	-----------------------------	---

RNAV (GPS) RWY 5

COOK COUNTY (15J)

RNP APCH - GPS.		MISSED APPROACH: Climb to 3000 direct WUMOM and hold, continue climb-in-hold to 3000.	
<p>▼ Procedure NA at night. ▲ NA Rwy 5 helicopter visibility reduction below 1 SM NA. Baro-VNAV NA. Use Moultrie altimeter setting.</p>			

AWOS-3PT 118.025	MGR AWOS-3PT 118.925	VALDOSTA APP CON★ 126.6 285.6	UNICOM 122.8 (CTAF)
----------------------------	--------------------------------	---	-------------------------------



CATEGORY	A	B	C	D
LPV DA		534-1	299 (300-1)	
LNAV/VNAV DA		595-1	360 (400-1)	
LNAV MDA	740-1	505 (600-1)	740-1 ³ / ₈	505 (600-1 ³ / ₈)

SE-4, 28 NOV 2024 to 26 DEC 2024

SE-4, 28 NOV 2024 to 26 DEC 2024