

RNAV (GPS) RWY 34

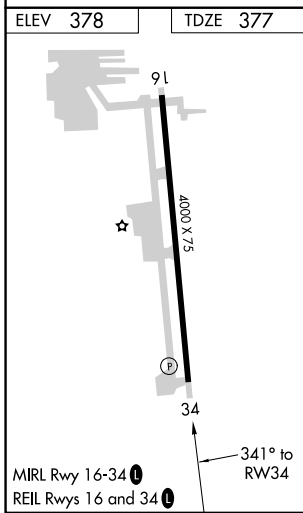
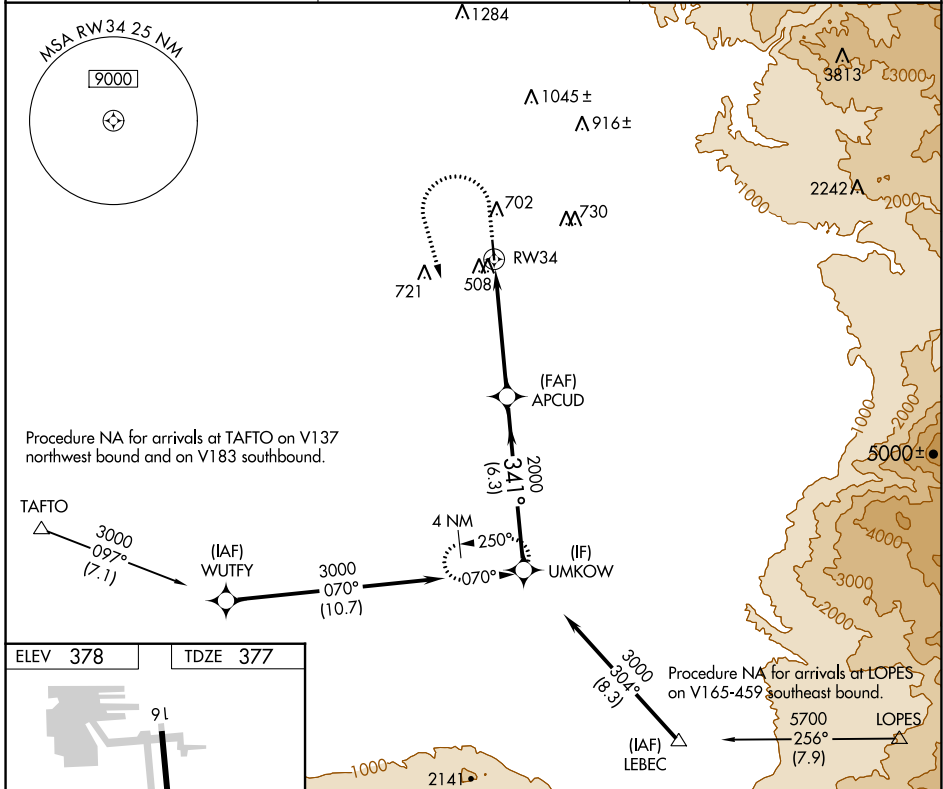
BAKERSFIELD MUNI (L45)

APP CRS 341°	Rwy Idg TDZE Apt Elev	4000 377 378
------------------------	-----------------------------	---

NA DME/DME RNP-0.3 NA. Use Meadows Fld altimeter setting. When Meadows Fld altimeter setting not received, use Porterville altimeter setting and increase all MDA 80 feet, increase LNAV and Circling Cat C and D visibility ¼ mile. Helicopter visibility reduction below ¾ SM NA. Night Landing Rwy 16 NA.

MISSED APPROACH: Climb to 1200 then climbing left turn to 3000 direct UMKOW and hold.

BFL ASOS 118.6	BAKERSFIELD APP CON * 126.45 270.3	UNICOM 122.8 (CTAF) 0
--------------------------	--	---------------------------------



ELEV 378	TDZE 377	Visual Segment - Obstacles.			
1200	3000	UMKOW	UMKOW		
APCUD	RWY 34				
4.9 NM		6.3 NM			
CATEGORY	A	B	C	D	
LNAV MDA	840-1	463 (500-1)	840-1 3/8	463 (500-1 3/8)	
C CIRCLING	1060-1	682 (700-1)	1120-2 1/4 742 (800-2 1/4)	1120-2 1/2 742 (800-2 1/2)	

SW-3, 28 NOV 2024 to 26 DEC 2024

SW-3, 28 NOV 2024 to 26 DEC 2024