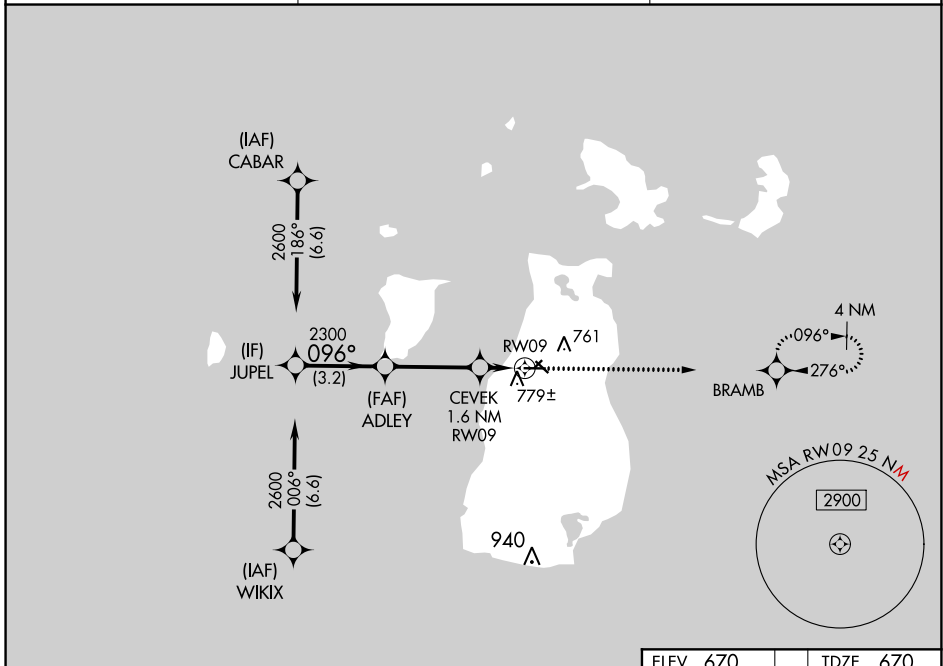


WAAS CH 77943 W09A	APP CRS 096°	Rwy Idg 4299 TDZE 670 Apt Elev 670
--	------------------------	---

RNAV (GPS) RWY 9

BEAVER ISLAND (SJX)

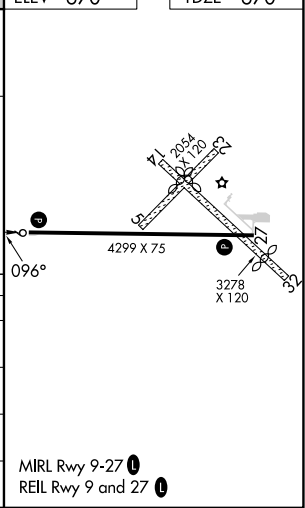
RNP APCH - GPS.		MISSED APPROACH: Climb to 2600 direct BRAMB and hold.
<p>▼ Circling NA to Rwys 5-23 and 14-32. For uncompensated Baro-VNAV systems, LNAV/VNAV NA below -16°C or above 54°C.</p>		
AWOS-3 118.075	MINNEAPOLIS CENTER 134.6 354.05	UNICOM 122.8 (CTAF) 0



EC-1, 28 NOV 2024 to 26 DEC 2024

EC-1, 28 NOV 2024 to 26 DEC 2024

VGSi and RNAV glidepath not coincident (VGSi Angle 3.00/TCH 24).		ELEV 670	TDZE 670
		2600	BRAMB
GP 3.00°	TCH 40		
CATEGORY	A	B	C
LPV DA	920-1	250 (300-1)	NA
LNAV/VNAV DA	949-1	279 (300-1)	NA
LNAV MDA	1040-1	370 (400-1)	NA
CIRCLING	1120-1	450 (500-1)	1180-1½ 510 (600-1½)



MIRL Rwy 9-27 0
REIL Rwy 9 and 27 0