

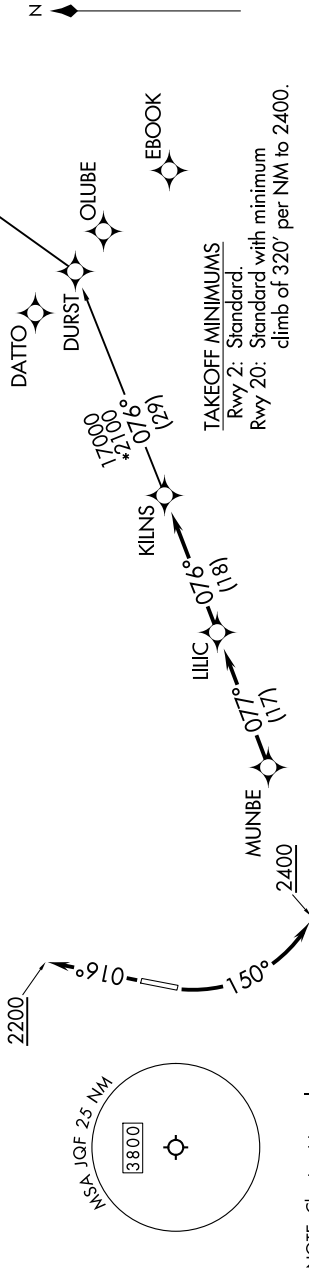
KILNS FIVE DEPARTURE (RNAV)

SE-2, 28 NOV 2024 to 26 DEC 2024

CHARLOTTE DEP CON
128.325 307.8
ATIS *
133.675
CLNC DEL
118.55
CLNC DEL (when twr closed)
127.25
GND CON
121.85
CONCORD TOWER *
134.65 (CTAF)
UNICOM
122.95

RNAV 1 - DME/DME/IRU or GPS.
RADAR required.

NOTE: For turbojets only.
NOTE: Transponder code will be issued via PDC or Charlotte CLNC DEL.
NOTE: Upon reaching 10000 MSL, accelerate to and maintain 280K, if unable advise ATC.
NOTE: If unable to accept climb rates, advise ATC on initial contact.



TOP ALTITUDE:
3000

DEPARTURE ROUTE DESCRIPTION

TAKEOFF RUNWAY 2: Climb on heading 016° to 2200, then on heading assigned by ATC, thence. . . .
TAKEOFF RUNWAY 20: Climbing left turn heading 150° to 2400, then on heading assigned by ATC, thence. . . .

. . . on RADAR vectors to MUNBE, then on depicted route to KILNS, then on AUDII transition. Maintain 3000. Expect clearance to filed altitude within 10 minutes after departure.

AUDIII TRANSITION (KILNS5.AUDIII)

KILNS FIVE DEPARTURE (RNAV)

SE-2, 28 NOV 2024 to 26 DEC 2024