

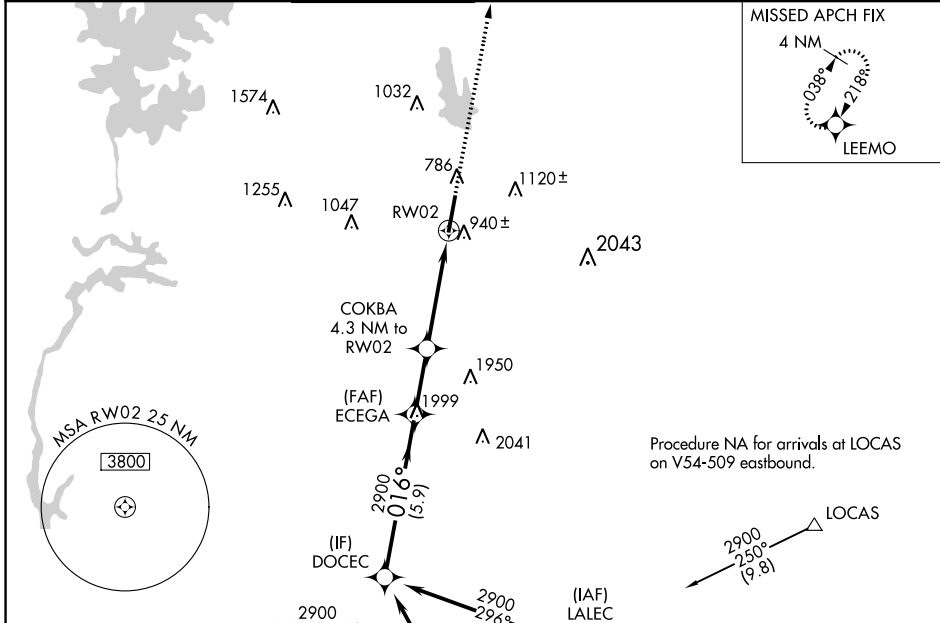
WAAS CH 93903 W02A	APP CRS 016°	Rwy Idg TDZE Apt Elev	7400 667 705
--	------------------------	-----------------------------	---

RNAV (GPS) RWY 2

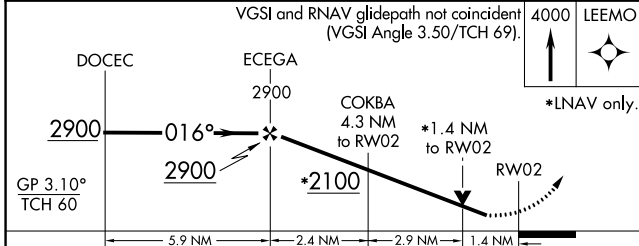
CONCORD-PADGETT RGNL (JQF)

RNP APCH.					MISSED APPROACH: Climb to 4000 direct LEEMO and hold, continue climb-in-hold to 4000.	
▼ Rwy 2 helicopter visibility reduction below 3/4 SM NA. ▲ For uncompensated Baro-VNAV systems, LNAV/VNAV NA below -16°C or above 45°C.						

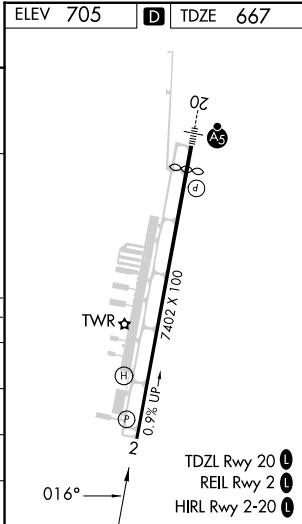
ATIS* 133.675	CHARLOTTE APP CON 128.325 307.8	CONCORD TOWER* 134.65 (CTAF) 0	GND CON 121.85	CLNC DEL 118.55	CLNC DEL 127.25 (when twr closed)	UNICOM 122.95
-------------------------	---	--	--------------------------	---------------------------	--	-------------------------



ELEV 705	D TDZE 667
----------	-------------------



CATEGORY	A	B	C	D
LPV DA		986-1 1/8	319 (300-1 1/8)	
LNAV/VNAV DA		1220-1 1/8	553 (600-1 1/8)	
LNAV MDA	1240-1	573 (600-1)	1240-1 1/8	573 (600-1 1/8)
C CIRCLING	1300-1	595 (600-1)	1480-2 1/4 775 (800-2 1/4)	1480-2 1/2 775 (800-2 1/2)



SE-2, 28 NOV 2024 to 26 DEC 2024

SE-2, 28 NOV 2024 to 26 DEC 2024