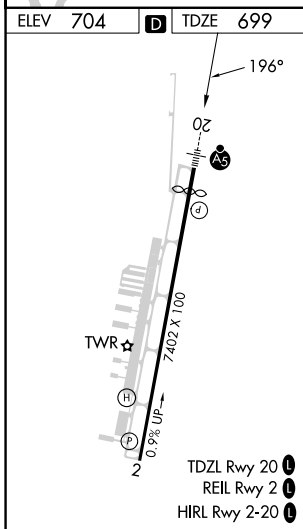
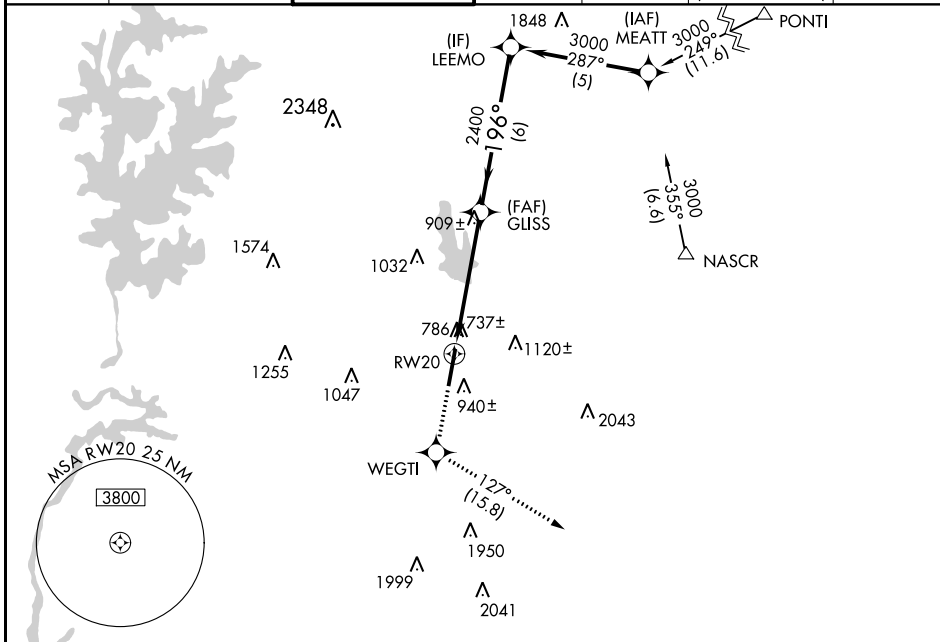


WAAS CH <b>56499</b> <b>W20A</b>	APP CRS <b>196°</b>	Rwy Idg TDZE Apt Elev	<b>6350</b> <b>699</b> <b>704</b>
--	------------------------	-----------------------------	---

# RNAV (GPS) RWY 20

CONCORD-PADGETT RGNL (JQF)

RNP APCH-GPS.		MALSR		MISSED APPROACH: Climb to 3000 direct WEGTI and on track 127° to LOCAS and hold.		
<p><b>V</b> For uncompensated Baro-VNAV systems, LNAV/VNAV NA below -16°C or above 54°C. For inop ALS, increase LNAV/VNAV visibility all Cats to 1½ SM. Rwy 20 helicopter visibility reduction below ¾ SM NA.</p>		<p><b>A5</b></p>				
ATIS* <b>133.675</b>	CHARLOTTE APP CON <b>128.325 307.8</b>	CONCORD TOWER* <b>134.65 (CTAF)</b>	GND CON <b>121.85</b>	CLNC DEL <b>118.55</b>	CLNC DEL <b>127.25</b> (when twr closed)	UNICOM <b>122.95</b>



ELEV 704	D	TDZE 699	LOCAS 093° 4 NM 273°	
3000	WEGTI	LOCAS	LEEMO	
↑	✧	↑	tr 127°	
*LNAV only.		GLISS	3000	
RW20	*1.8 NM to RW20	2400	196°	GP 3.00° TCH 44
1.8 NM		3.3 NM	6 NM	
CATEGORY	A	B	C	D
LPV DA		1026-¾	327 (400-¾)	
LNAV/VNAV DA		1222-1¼	523 (600-1¼)	
LNAV MDA	1300-¾	601 (600-¾)	1300-1⅓	601 (600-1⅓)
<b>C</b> CIRCLING	1300-1	596 (600-1)	1480-2¼ 776 (800-2¼)	1480-2½ 776 (800-2½)

SE-2, 28 NOV 2024 to 26 DEC 2024

SE-2, 28 NOV 2024 to 26 DEC 2024