

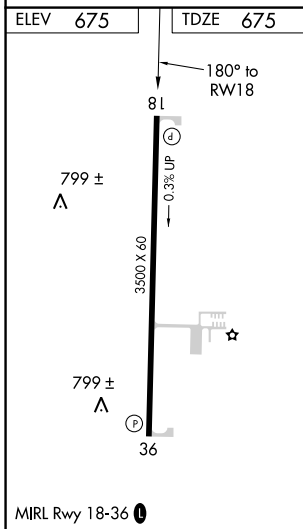
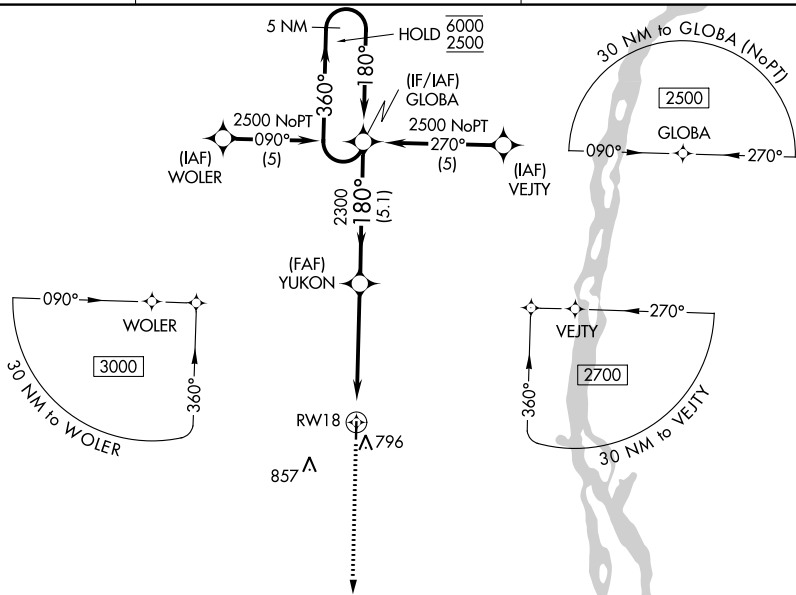
WAAS CH 50401 W18A	APP CRS 180°	Rwy Idg TDZE Apt Elev	3500 675 675
--	------------------------	-----------------------------	---

RNAV (GPS) RWY 18

LEWIS COUNTY RGNL (6M6)

RNP APCH.	Baro-VNAV NA. Use Quincy altimeter setting; when not received use Kirksville altimeter setting: increase LPV DA to 1098 feet; increase LNAV/VNAV DA to 1145 feet; increase all MDA 80 feet.	MISSED APPROACH: Climb to 2300 direct GRITE and hold.
-----------	--	---

UIN ASOS 121.425	KANSAS CITY CENTER 126.225 317.775	UNICOM 122.7 (CTAF) 0
----------------------------	--	---------------------------------



ELEV 675	TDZE 675	1643 Δ	
799 \pm Δ	8L	GRITE	4 NM Holding Pattern
799 \pm Δ	36	YUKON 2300	GLOBA 2300
		4.9 NM	5.1 NM
		6000	2500
		360°	180°
		GP 3.00°	TCH 40
MIRL Rwy 18-36 0			
CATEGORY	A	B	C
LPV DA	1035-1 $\frac{1}{4}$	360 (400-1 $\frac{1}{4}$)	NA
LNAV/VNAV DA	1082-1 $\frac{1}{2}$	407 (500-1 $\frac{1}{2}$)	NA
LNAV MDA	1220-1	545 (600-1)	NA