

WAAS CH 42737 W27A	APP CRS 271°	Rwy Idg TDZE Apt Elev	5001 733 738
--	------------------------	-----------------------------	---

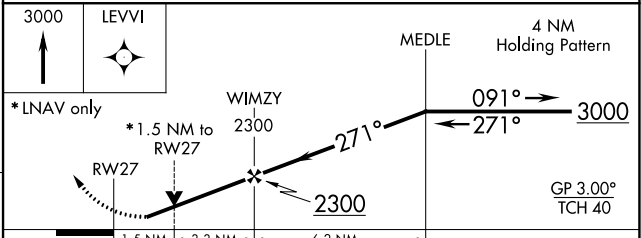
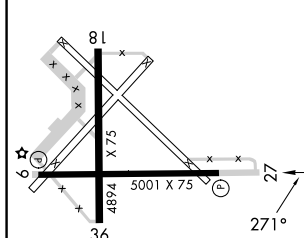
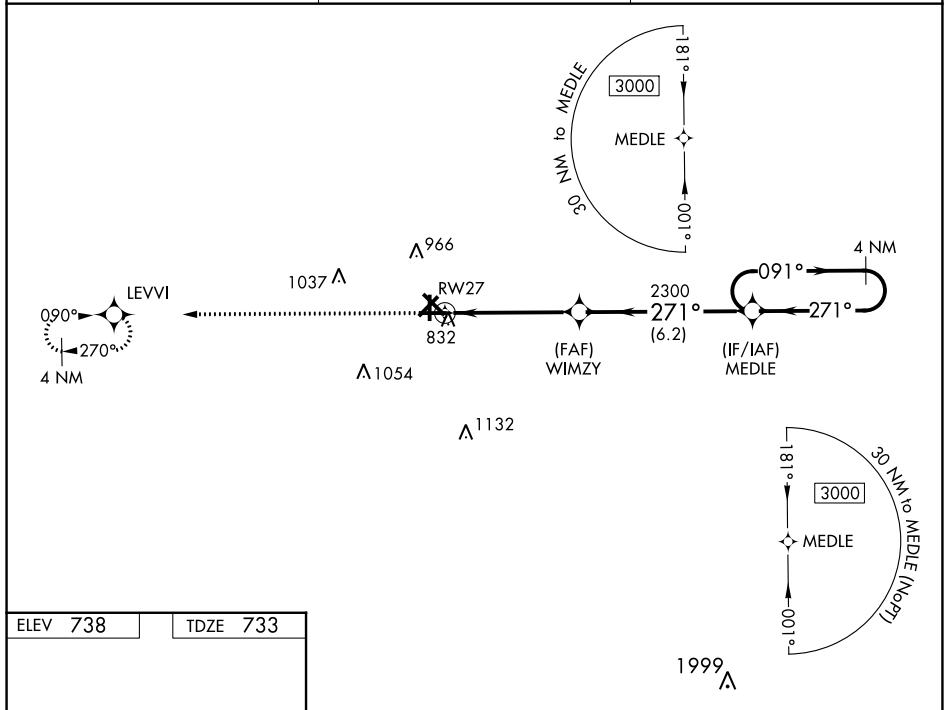
RNAV (GPS) RWY 27

RANTOUL NTL AVN CNTR-FRANK ELLIOTT FLD (TIP)

⚠ For uncompensated Baro-VNAV systems, LNAV/VNAV NA below -16°C (4°F) or above 54°C (130°F). DME/DME RNP-0.3 NA. When local altimeter setting not received, use Champaign Urbana altimeter setting and increase all DA 41 feet and all MDA 60 feet; increase LNAV/VNAV all Cats visibility 1/8 mile and LNAV and Circling Cats C/D visibility 1/4 mile. Baro-VNAV and VDP NA when using Champaign Urbana altimeter setting. Helicopter visibility reduction below 1/4 SM NA.

MISSED APPROACH:
Climb to 3000 direct LEVVI and hold.

AWOS-3 119.025	CHAMPAIGN APP CON * 121.35 285.65	UNICOM 123.0 (CTAF) ①
--------------------------	---	--



ELEV 738	TDZE 733																									
<table border="1"> <thead> <tr> <th>CATEGORY</th> <th>A</th> <th>B</th> <th>C</th> <th>D</th> </tr> </thead> <tbody> <tr> <td>LPV DA</td> <td colspan="2">983-1</td> <td colspan="2">250 (300-1)</td> </tr> <tr> <td>LNAV/VNAV DA</td> <td colspan="2">1029-1</td> <td colspan="2">296 (300-1)</td> </tr> <tr> <td>LNAV MDA</td> <td colspan="2">1240-1 507 (600-1)</td> <td colspan="2">1240-1 3/8 507 (600-1 3/8)</td> </tr> <tr> <td>CIRCLING</td> <td>1240-1 502 (600-1)</td> <td>1280-1 542 (600-1)</td> <td>1380-1 3/4 642 (700-1 3/4)</td> <td>1420-2 1/4 682 (700-2 1/4)</td> </tr> </tbody> </table>		CATEGORY	A	B	C	D	LPV DA	983-1		250 (300-1)		LNAV/VNAV DA	1029-1		296 (300-1)		LNAV MDA	1240-1 507 (600-1)		1240-1 3/8 507 (600-1 3/8)		CIRCLING	1240-1 502 (600-1)	1280-1 542 (600-1)	1380-1 3/4 642 (700-1 3/4)	1420-2 1/4 682 (700-2 1/4)
CATEGORY	A	B	C	D																						
LPV DA	983-1		250 (300-1)																							
LNAV/VNAV DA	1029-1		296 (300-1)																							
LNAV MDA	1240-1 507 (600-1)		1240-1 3/8 507 (600-1 3/8)																							
CIRCLING	1240-1 502 (600-1)	1280-1 542 (600-1)	1380-1 3/4 642 (700-1 3/4)	1420-2 1/4 682 (700-2 1/4)																						

RANTOUL, ILLINOIS
Amdt 2 15OCT15

RANTOUL NTL AVN CNTR-FRANK ELLIOTT FLD (TIP)
40°18'N-88°09'W
RNAV (GPS) RWY 27

EC-3, 28 NOV 2024 to 26 DEC 2024

EC-3, 28 NOV 2024 to 26 DEC 2024