

APP CRS 323°	Rwy Idg TDZE Apt Elev	N/A N/A 5335
------------------------	-----------------------------	---

RNAV (GPS)-A

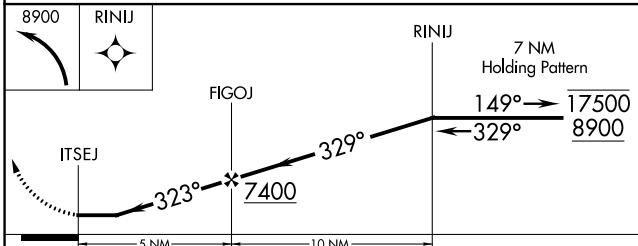
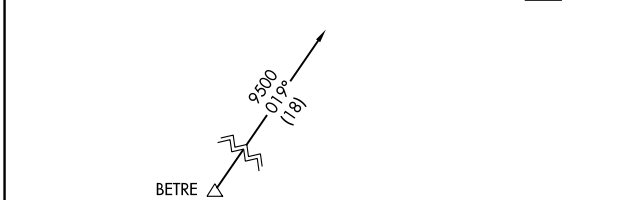
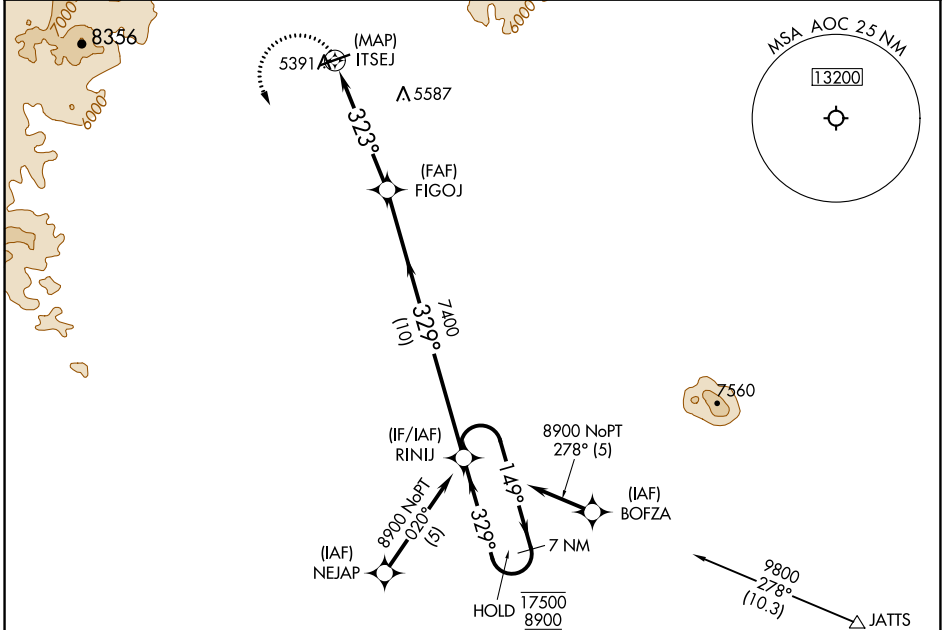
ARCO-BUTTE COUNTY (AOC)

RNP APCH.

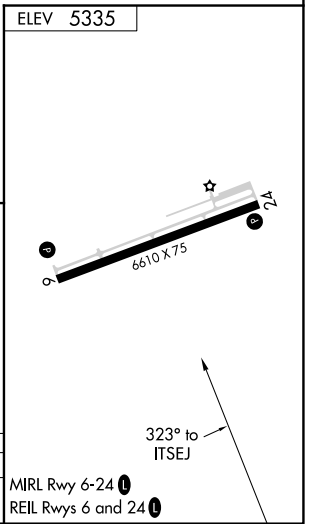
NA Circling NA for Cats C and D northwest of Rwy 6-24. When local altimeter setting not received, use Pocatello Rgnl altimeter setting and increase all MDAs 600 feet. Increase Cat A/B visibility to 1¼ SM and Cat C visibility to 3 SM.

MISSED APPROACH: Climbing left turn to 8900 direct RINIJ and hold, continue climb in hold to 8900.

SALT LAKE CENTER 128.35 239.25	UNICOM 122.8 (CTAF)
--	-------------------------------



CATEGORY	A	B	C	D
CIRCLING	5920-1	585 (600-1)	5940-1¼ 605 (700-1¼)	6680-3 1345 (1400-3)



NW-1, 28 NOV 2024 to 26 DEC 2024

NW-1, 28 NOV 2024 to 26 DEC 2024