

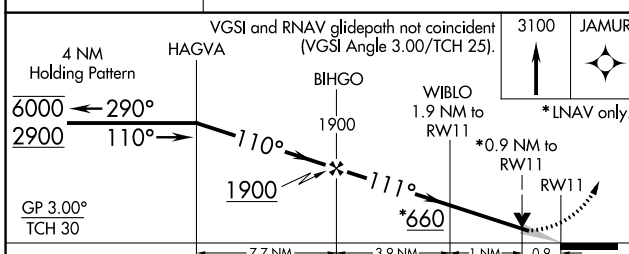
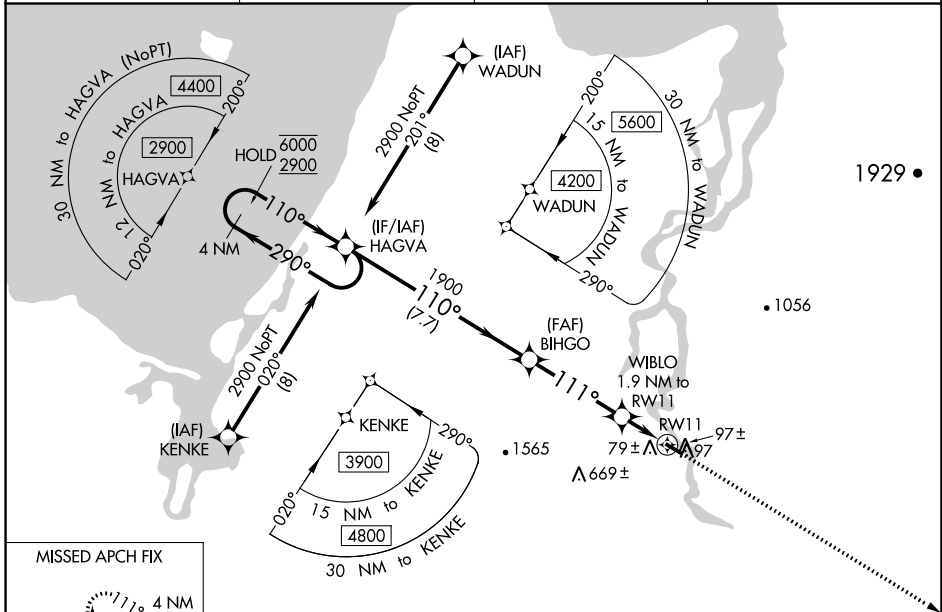
WAAS CH <b>58041</b> W11A	APP CRS <b>111°</b>	Rwy Idg <b>3200</b> TDZE <b>29</b> Apt Elev <b>29</b>
---------------------------------	------------------------	-------------------------------------------------------------

# RNAV (GPS) RWY 11

BUCKLAND (BVK)(PABL)

RNP APCH.	MISSED APPROACH: Climb to 3100 direct JAMUR and hold, continue climb-in-hold to 3100.
<p>▼ Baro-VNAV and VDP NA when using Selawik altimeter setting. For uncompensated Baro-VNAV systems, LNAV/VNAV NA below -21°C or above 54°C.</p> <p>▲ When local altimeter setting is not received use Selawik altimeter setting; increase DA to 387 feet and all visibilities <math>\frac{3}{8}</math> SM; increase all MDAs 120 feet and visibility Cat C <math>\frac{1}{4}</math> SM.</p>	

AWOS-3P <b>135.15</b>	ANCHORAGE CENTER <b>119.2 263.0</b>	KOTZEBUE RADIO <b>122.3</b>	CTAF <b>122.9 0</b>
--------------------------	----------------------------------------	--------------------------------	------------------------



ELEV 29	TDZE 29
MRL Rwy 11-29 0	

CATEGORY	A	B	C	D
LPV DA	279-1	250 (300-1)		NA
LNAV/VNAV DA	279-1	250 (300-1)		NA
LNAV MDA	340-1	311 (400-1)		NA
<b>C</b> CIRCLING	540-1	511 (600-1)	640-1 $\frac{3}{4}$ 611 (700-1 $\frac{3}{4}$ )	NA

AK, 31 OCT 2024 to 26 DEC 2024

AK, 31 OCT 2024 to 26 DEC 2024