

WAAS CH 42608 W03A	APP CRS 032°	Rwy Idg TDZE Apt Elev	4000 220 220
--	------------------------	-----------------------------	---

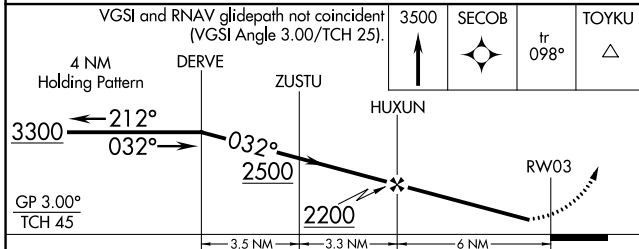
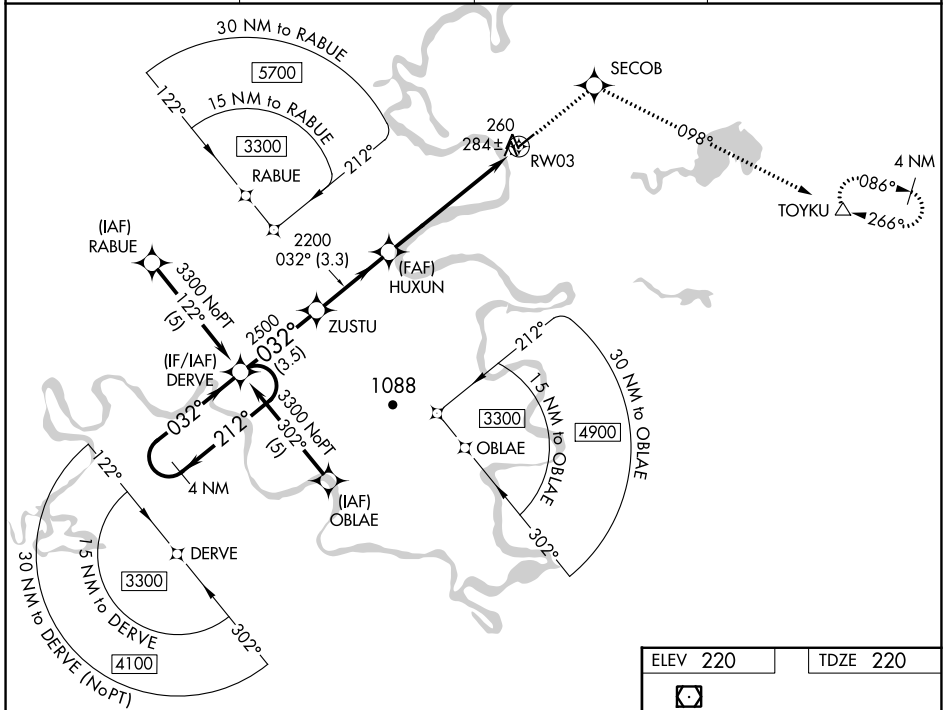
RNAV (GPS) RWY 3

HUSLIA (HLA)(PAHL)

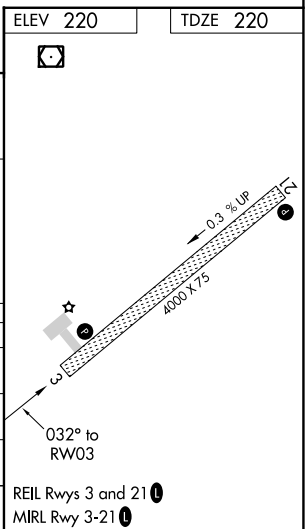
▼ For uncompensated Baro-VNAV systems, LNAV/VNAV NA below -25°C (-13°F) or above 48°C (118°F). Helicopter visibility reduction below ¾ SM NA. DME/DME RNP-0.3 NA.

MISSED APPROACH: Climb to 3500 direct SECOB and via 098° track to TOYKU and hold, continue climb-in-hold to 3500.

AWOS-3P 135.75	ANCHORAGE CENTER 127.0 290.2	FAIRBANKS RADIO 122.4	UNICOM 122.8 (CTAF) 0
--------------------------	--	---------------------------------	---------------------------------



CATEGORY	A	B	C	D
LPV DA		525-1	305 (400-1)	
LNAV/VNAV DA		567-1¼	347 (400-1¼)	
LNAV MDA		540-1	320 (400-1)	
CIRCLING	600-1 380 (400-1)	680-1 460 (500-1)	680-1½ 460 (500-1½)	780-2 560 (600-2)



AK, 31 OCT 2024 to 26 DEC 2024

AK, 31 OCT 2024 to 26 DEC 2024