

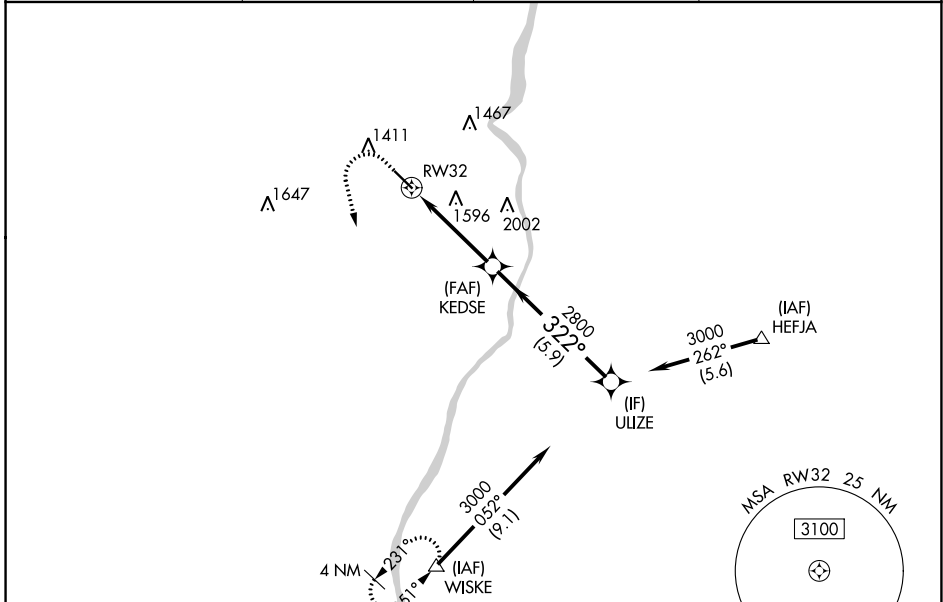
WAAS CH 58339 W32A	APP CRS 322°	Rwy Idg TDZE Apt Elev	5001 1192 1198
--	------------------------	-----------------------------	---

RNAV (GPS) RWY 32

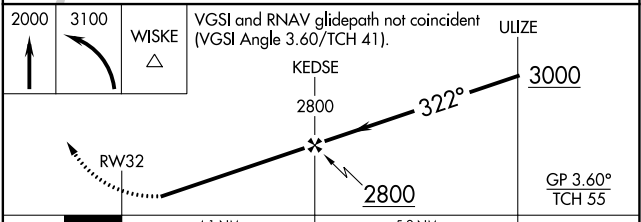
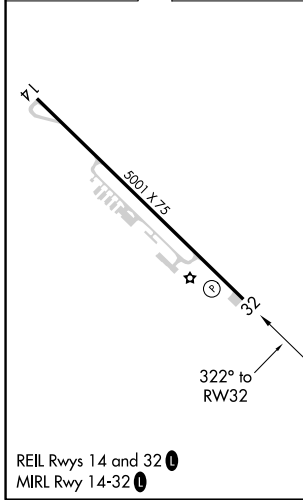
GEARY A BATES/JEFFERSON COUNTY AIRPARK (2G2)

RNP APCH.	MISSED APPROACH: Climb to 2000 then climbing left turn to 3100 direct WISKE and hold.
<p>▽ Rwy 32 helicopter visibility reduction below 3/4 SM NA.</p> <p>▲ Baro-VNAV NA when using Wheeling altimeter setting.</p> <p>For uncompensated Baro-VNAV systems, LNAV/VNAV NA below -17°C or above 54°C. When local altimeter not received, use Wheeling altimeter setting.</p>	

AWOS-3 121.625	HLG ASOS 127.375	PITTSBURGH APP CON 124.75 338.2	UNICOM 122.8 (CTAF) 0
--------------------------	----------------------------	---	---------------------------------



ELEV 1198	TDZE 1192
-----------	-----------



CATEGORY	A	B	C	D
LPV DA	1519-1		327 (400-1)	NA
LNAV/VNAV DA	1972-2 1/2		780 (800-2 1/2)	NA
LNAV MDA	1880-1	688 (700-1)		1880-2 688 (700-2)
C CIRCLING	1880-1 682 (700-1)	1980-1 782 (800-1)	1980-2 1/4 782 (800-2 1/4)	

RNAV (GPS) RWY 32

EC-2, 28 NOV 2024 to 26 DEC 2024

EC-2, 28 NOV 2024 to 26 DEC 2024