

WAAS CH 70630 W30A	APP CRS 293°	Rwy Idg TDZE Apt Elev	4300 918 918
--	------------------------	-----------------------------	---

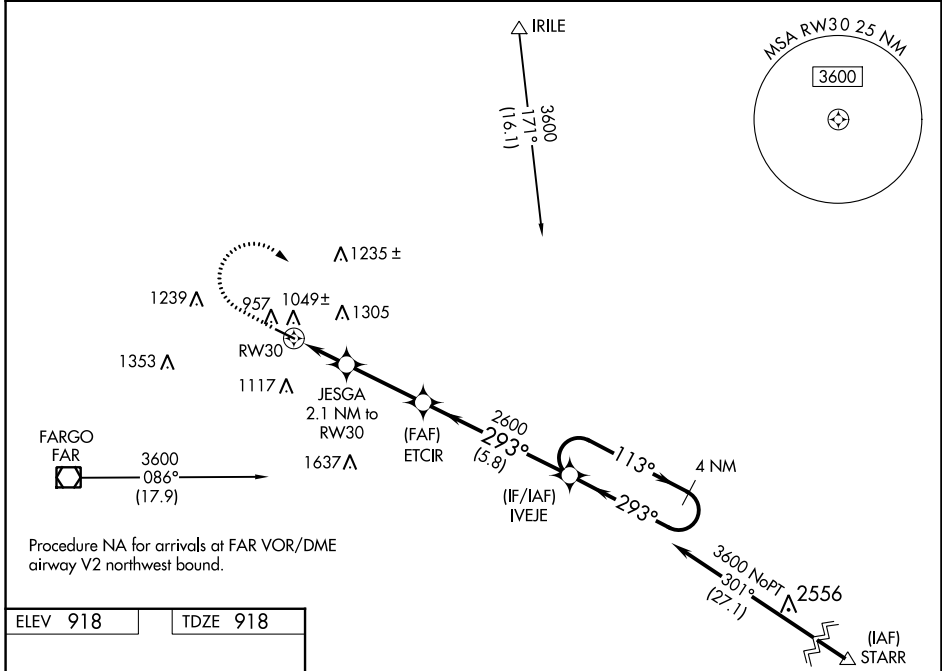
RNAV (GPS) RWY 30

MOORHEAD MUNI/FLORENCE KLINGENSMITH FLD (JKJ)

⚠ For uncompensated Baro-VNAV systems, LNAV/VNAV NA below -16°C (4°F) or above 54°C (130°F). DME/DME RNP-0.3 NA. When local altimeter setting not received, use Hector Intl altimeter setting and increase all DA 21 feet, increase all MDA 40 feet.

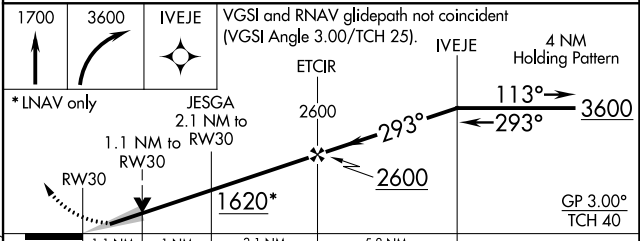
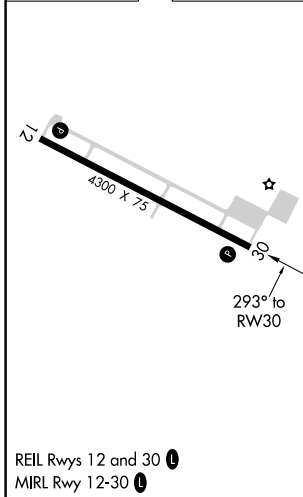
MISSED APPROACH: Climb to 1700 then climbing right turn to 3600 direct IVEJE and hold.

AWOS-3 120.0	FARGO APP CON 120.4 377.15	GCO 121.725	UNICOM 123.0 (CTAF) 📻
------------------------	--------------------------------------	-----------------------	--



Procedure NA for arrivals at FAR VOR/DME airway V2 northwest bound.

ELEV 918	TDZE 918
----------	----------



CATEGORY	A	B	C	D
LPV DA	1168-1	250 (300-1)		NA
LNAV/VNAV DA	1211-1	293 (300-1)		NA
LNAV MDA	1300-1	382 (400-1)		NA
CIRCLING	1360-1 442 (500-1)	1380-1 462 (500-1)		NA

RNAV (GPS) RWY 30

NC-1, 28 NOV 2024 to 26 DEC 2024

NC-1, 28 NOV 2024 to 26 DEC 2024