

APP CRS	Rwy Idg	<b>2042</b>
<b>006°</b>	TDZE	<b>30</b>
	Apt Elev	<b>30</b>

# GPS RWY 1

HUMMEL FLD (W75)

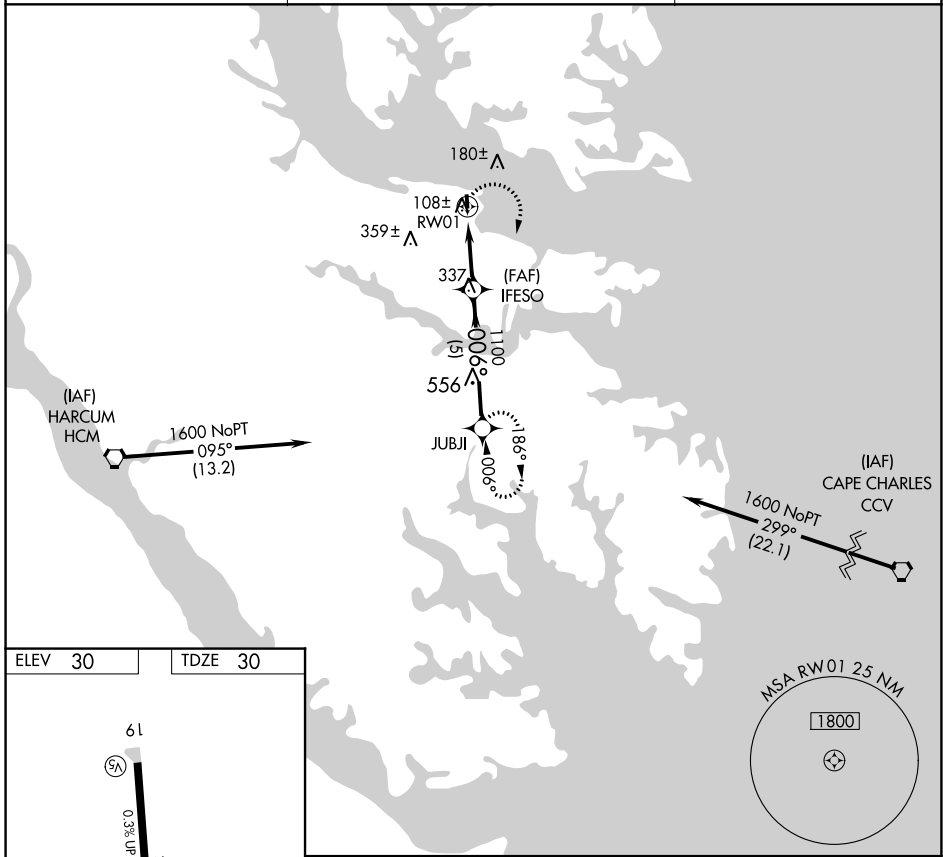
**▼** Use Newport News/Williamsburg Intl altimeter setting.  
**▲ NA** Procedure NA at night.

MISSED APPROACH: Climbing right turn to 1600 direct JUBJI WP and hold.

AWOS-3  
**118.45**

NORFOLK APP CON  
**126.05 370.925**

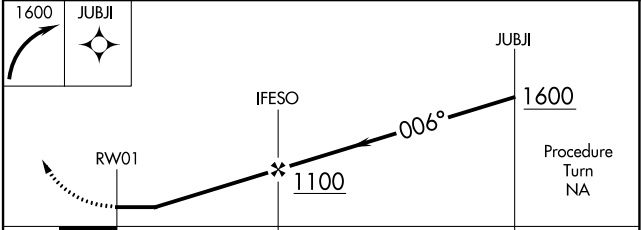
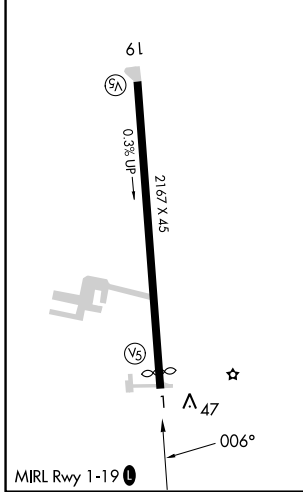
UNICOM  
**123.0 (CTAF)**



NE-3, 28 NOV 2024 to 26 DEC 2024

NE-3, 28 NOV 2024 to 26 DEC 2024

ELEV 30	TDZE 30
---------	---------



CATEGORY	A	B	C	D
S-1	1040-3	1010 (1100-3)		NA
CIRCLING	1040-3	1010 (1100-3)		NA