

WAAS CH 42822 W24A	APP CRS 247°	Rwy Idg TDZE Apt Elev	5500 665 665
--	------------------------	-----------------------------	---

RNAV (GPS) RWY 24

SANDUSKY COUNTY RGNL (S24)

RNP APCH.

NA For uncompensated Baro-VNAV systems, LNAV/VNAV NA below -16°C (4°F) or above 54°C (130°F). Baro-VNAV and VDP NA when using Toledo Express altimeter setting. When local altimeter setting not received, use Toledo Express altimeter setting: increase LPV DA to 978 feet and all visibilities $\frac{3}{8}$ SM; increase LNAV/VNAV DA to 1196 feet and all visibilities $\frac{3}{8}$ SM; increase all MDA 100 feet and LNAV visibility Cat C and D $\frac{1}{4}$ SM and Circling visibility Cat C and D $\frac{1}{2}$ SM.

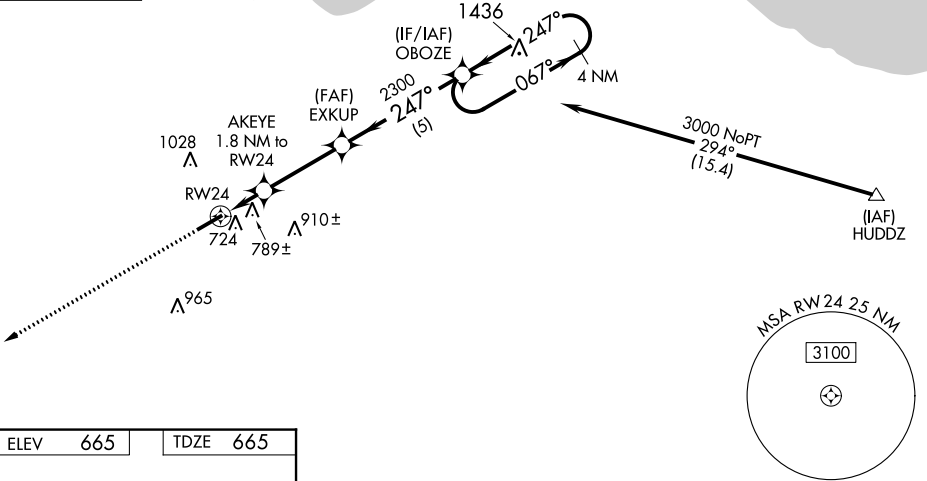
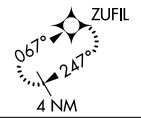
MISSED APPROACH:
Climb to 3000 direct ZUFIL and hold.

AWOS-3P
119.575

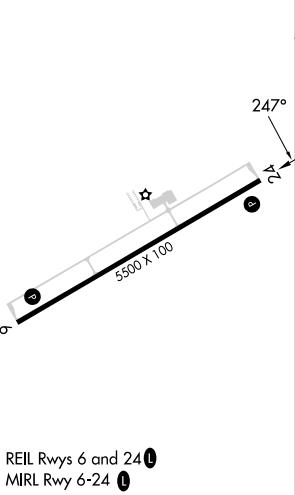
TOLEDO APP CON
126.1 307.0

UNICOM
123.05 (CTAF) 0

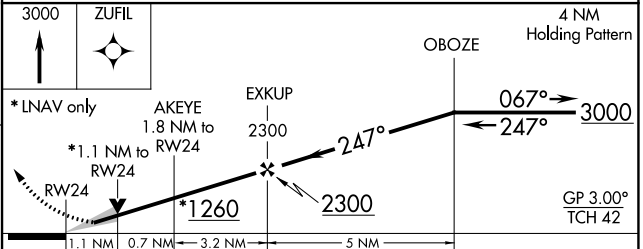
MISSED APCH FIX



ELEV	665	TDZE	665
------	-----	------	-----



REIL Rws 6 and 24 **0**
MIRL Rwy 6-24 **0**



CATEGORY	A	B	C	D
LPV DA	885- $\frac{3}{4}$		220 (300- $\frac{3}{4}$)	
LNAV/VNAV DA	1103-1 $\frac{1}{2}$		438 (500-1 $\frac{1}{2}$)	
LNAV MDA	1040-1	375 (400-1)	1040-1 $\frac{1}{8}$	375 (400-1 $\frac{1}{8}$)
C CIRCLING	1120-1 455 (500-1)	1160-1 495 (500-1)	1380-2 715 (800-2)	1380-2 $\frac{1}{4}$ 715 (800-2 $\frac{1}{4}$)