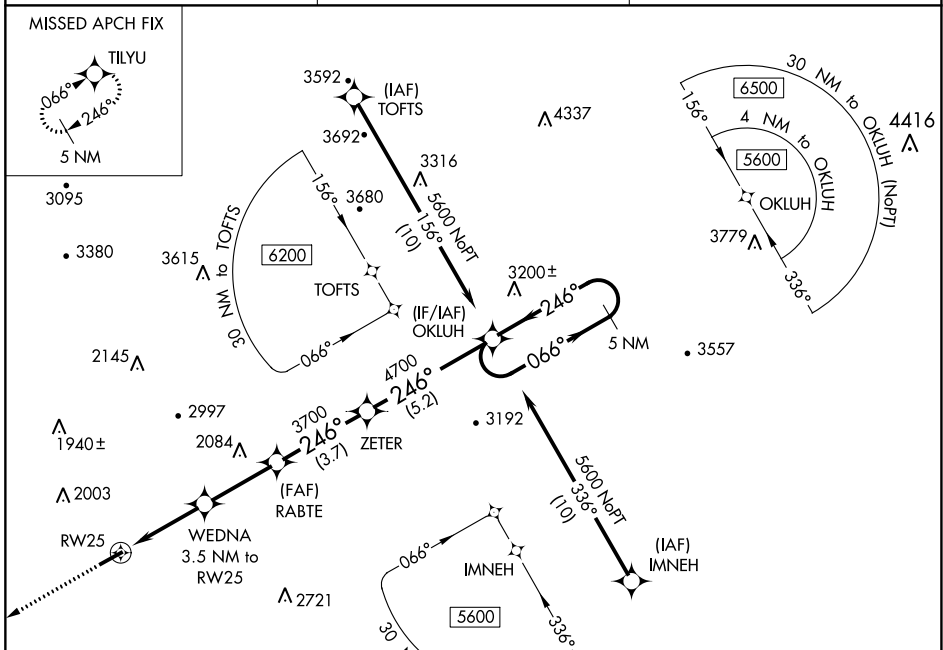


WAAS CH 82717 W25A	APP CRS 246°	Rwy Idg TDZE Apt Elev	5003 1411 1411
--	------------------------	-----------------------------	---

RNAV (GPS) RWY 25

LEE COUNTY (ØVG)

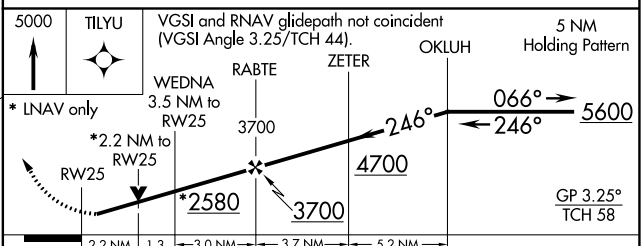
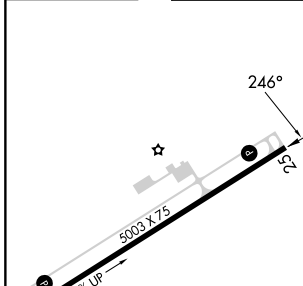
Helicopter visibility reduction below ¾ SM NA. DME/DME RNP-0.3 NA.	MISSED APPROACH: Climb to 5000 direct TILYU and hold, continue climb-in-hold to 5000.	
AWOS-3 120.125	ATLANTA CENTER 127.55 269.50	CTAF 122.90



NE-3, 28 NOV 2024 to 26 DEC 2024

NE-3, 28 NOV 2024 to 26 DEC 2024

ELEV 1411	TDZE 1411
-----------	-----------



CATEGORY	A	B	C	D
LPV / DA	1714-1	303 (400-1)		NA
RNAV / DA	2284-3	873 (900-3)		NA
RNAV MDA	2220-1 809 (900-1)	2220-1¼ 809 (900-1¼)	2220-2½ 809 (900-2½)	NA
CIRCLING	2220-1	809 (900-1)	2600-3 1189 (1200-3)	NA