

WAAS CH 49233 W36A	APP CRS 357°	Rwy Idg TDZE Apt Elev	3400 1220 1221
--	------------------------	-----------------------------	---

RNAV (GPS) RWY 36

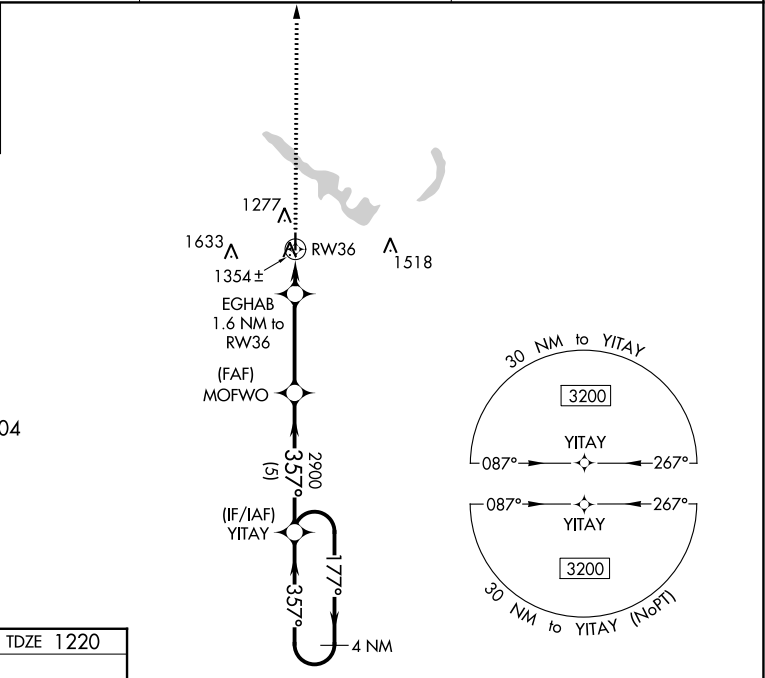
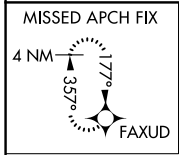
GUTHRIE COUNTY RGNL (GCT)

RNP APCH - GPS.

NA Baro-VNAV NA. Use Audubon altimeter setting; when not received, use Carroll altimeter setting and increase LPV DA to 1533, LNAV/VNAV DA to 1580, and all MDA 20 feet. Rwy 36 helicopter visibility reduction below $\frac{3}{4}$ SM NA.

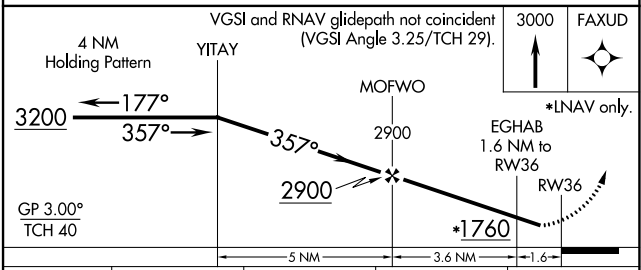
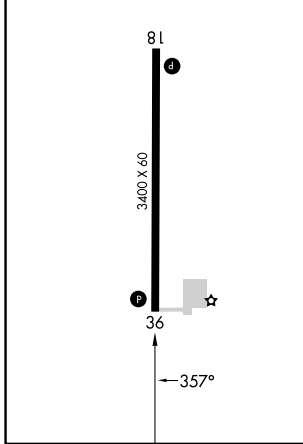
MISSED APPROACH: Climb to 3000 direct FAXUD and hold.

ADU AWOS-3 118.075	DES MOINES APP CON 123.9 360.7	UNICOM 122.8 (CTAF) 0
------------------------------	--	---------------------------------



ELEV 1221	TDZE 1220
-----------	-----------

REIL Rwy 18 and 36 **1**
MIRL Rwy 18-36 **1**



CATEGORY	A	B	C	D
LPV DA	1530-1	310 (400-1)		NA
LNAV/VNAV DA	1577-1¼	357 (400-1¼)		NA
LNAV MDA	1680-1	460 (500-1)		NA
C CIRCLING	1740-1 519 (600-1)	1880-1 659 (700-1)		NA

NC-3, 28 NOV 2024 to 26 DEC 2024

NC-3, 28 NOV 2024 to 26 DEC 2024