

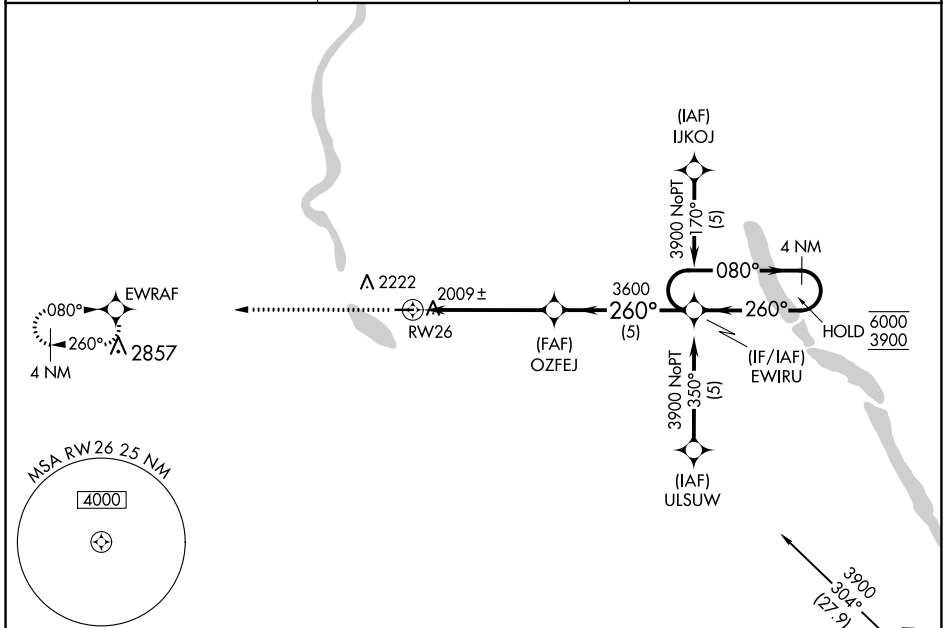
APP CRS	Rwy Idg	<b>3700</b>
<b>260°</b>	TDZE	<b>1960</b>
	Apt Elev	<b>1962</b>

# RNAV (GPS) RWY 26

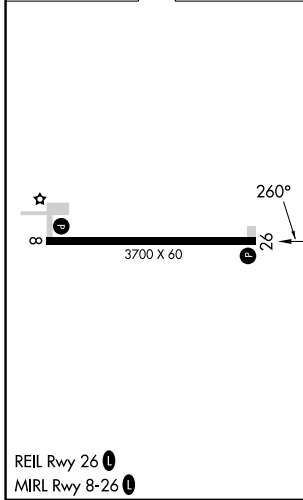
KENMARE MUNI (7K5)

RNP APCH.	Procedure NA at night. Use Minot Intl altimeter setting.	MISSED APPROACH: Climb to 4000 direct EWRAF and hold.
-----------	---	---

MOT ASOS <b>118.725</b>	MINOT APP CON * <b>119.6 363.8</b>	UNICOM <b>122.8 (CTAF) 0</b>
----------------------------	---------------------------------------	---------------------------------



ELEV 1962	TDZE 1960
-----------	-----------



4000	EWRAF	VGSIs and descent angles not coincident (VGSIs Angle 3.00/TCH 30).			
		OZFEJ	EWIRU	4 NM Holding Pattern	
		RW26		080°	6000
				←260°	3900
		5.1 NM	5 NM		
CATEGORY	A	B	C	D	
LNAV MDA	2420-1 460 (500-1)		NA		
CIRCLING	2660-1¼ 698 (700-1¼)	2660-1½ 698 (700-1½)	NA		

NC-1, 28 NOV 2024 to 26 DEC 2024

NC-1, 28 NOV 2024 to 26 DEC 2024