

WAAS CH <b>58221</b> <b>W35A</b>	APP CRS <b>348°</b>	Rwy Idg TDZE Apt Elev	<b>6300</b> <b>5022</b> <b>5022</b>
--	------------------------	-----------------------------	---

# RNAV (GPS) RWY 35

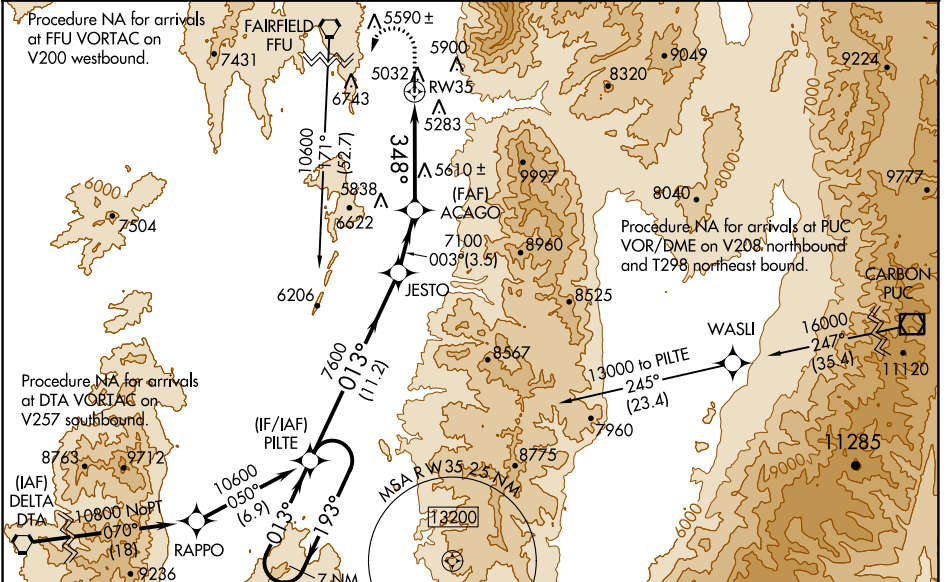
NEPHI MUNI (U14)

RNP APCH - GPS.

**NA** Baro-VNAV NA when using Provo altimeter setting. For uncompensated Baro-VNAV systems, LNAV/VNAV NA below -24°C or above 12°C. Circling NA for Cat C east of Rwy 17 and 35. Rwy 35 helicopter visibility reduction below 3/4 SM NA. VDP NA with Provo altimeter setting. When local altimeter setting not received, use Provo altimeter setting: increase LPV DA to 5416 feet and visibility all Cats 1/2 SM, increase LNAV/VNAV DA to 5740 feet and visibility all Cats 1/2 SM; increase all MDAs 160 feet and LNAV visibility Cats B/C/D and Circling visibility Cats A/B 1/2 SM.

**MISSED APPROACH:** Climb to 8200 then climbing left turn to 10600 direct PILTE and hold.

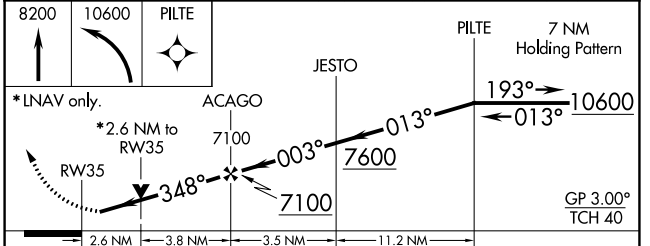
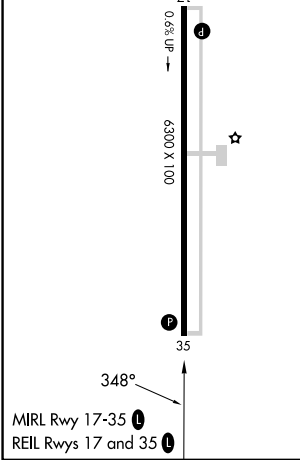
AWOS-3 <b>118.275</b>	SALT LAKE CENTER <b>127.825 239.025</b>	UNICOM <b>123.075 (CTAF) 0</b>
--------------------------	--	-----------------------------------



SW-4, 28 NOV 2024 to 26 DEC 2024

SW-4, 28 NOV 2024 to 26 DEC 2024

ELEV 5022	TDZE 5022
-----------	-----------



CATEGORY	A	B	C	D
LPV DA		5272-7/8	250 (300-7/8)	
LNAV/VNAV DA		5596-2	574 (600-2)	
LNAV MDA	5940-1 1/4	918 (1000-1 1/4)	5940-2 1/2	918 (1000-2 1/2)
CIRCLING	5900-1 1/4	878 (900-1 1/4)	6920-3 1898 (1900-3)	NA