

# RNAV (GPS) Y RWY 18

PICAYUNE MUNI (MJD)

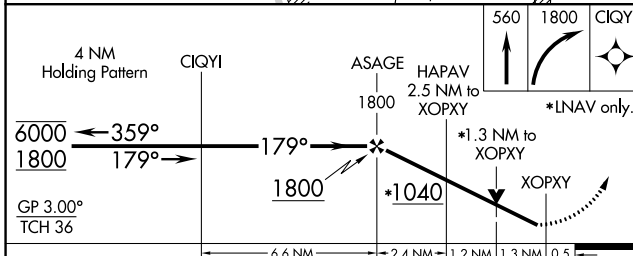
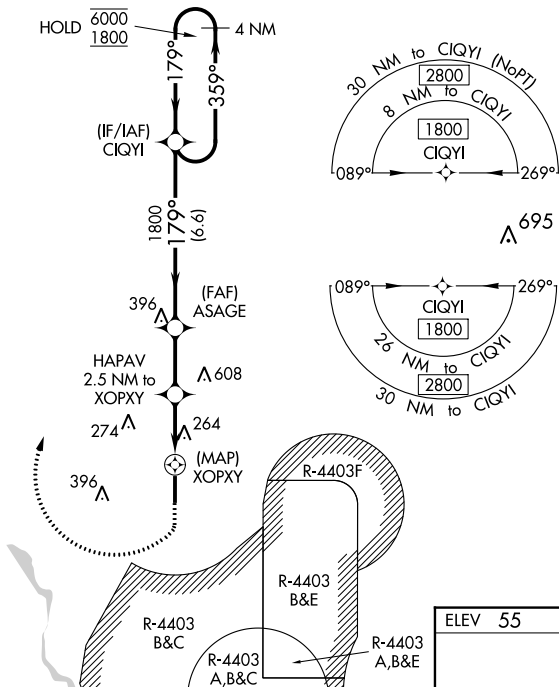
|  |                        |   |
|--|------------------------|---|
| WAAS<br>CH <b>42938</b><br><b>W18A</b> | APP CRS<br><b>179°</b> | Rwy Idg <b>5000</b><br>TDZE <b>55</b><br>Apt Elev <b>55</b> |
|--|------------------------|---|

RNP APCH.

**⚠** Baro-VNAV and VDP NA when using Stennis Intl altimeter setting. Rwy 18 helicopter visibility reduction below  $\frac{3}{4}$  SM NA. For uncompensated Baro-VNAV systems, LNAV/VNAV NA below -15°C or above 5°C. When local altimeter setting not received, use Stennis Intl altimeter setting: increase LPV DA to 377 and visibility all Cats  $\frac{1}{8}$  mile; increase LNAV/VNAV DA to 621 and visibility all Cats  $\frac{1}{8}$  mile; increase all MDA 40 feet. Procedure NA when R-4403 B/C/E is active.

MISSED APPROACH: (Do not exceed 185K) Climb to 560 then climbing right turn to 1800 direct CIQYI and hold.

|                            |  |                                 |
|----------------------------|--|---------------------------------|
| AWOS-3PT<br><b>119.075</b> | GULFPORT APP CON *<br><b>124.6 354.1</b> | UNICOM<br><b>122.8 (CTAF) ①</b> |
|----------------------------|--|---------------------------------|



|         |         |
|---------|---------|
| ELEV 55 | TDZE 55 |
|---------|---------|

Vertical scale diagram showing altitudes 560, 1800, and 36. A star symbol is at 81. A vertical bar is labeled 5000 X 75.

|                      |        |        |                       |             |      |       |
|----------------------|--------|--------|-----------------------|-------------|------|-------|
| 4 NM Holding Pattern | CIQYI  | ASAGE  | HAPAV 2.5 NM to XOPXY | 560         | 1800 | CIQYI |
| GP 3.00° TCH 36      | 1800   | *1040  | *1.3 NM to XOPXY      | *LNAV only. |      |       |
|                      | 6.6 NM | 2.4 NM | 1.2 NM                | 1.3 NM      | 0.5  |       |

MIRL Rwy 18-36 ①

| CATEGORY          | A                    | B                    | C                          | D                          |
|-------------------|----------------------|----------------------|----------------------------|----------------------------|
| LPV DA            |                      | 343-1                | 288 (300-1)                |                            |
| LNAV/VNAV DA      |                      | 587-1 $\frac{7}{8}$  | 532 (600-1 $\frac{7}{8}$ ) |                            |
| LNAV MDA          | 520-1                | 465 (500-1)          | 520-1 $\frac{3}{8}$        | 465 (500-1 $\frac{3}{8}$ ) |
| <b>C</b> CIRCLING | 520-1<br>465 (500-1) | 580-1<br>525 (600-1) | NA                         |                            |

SC-4, 28 NOV 2024 to 26 DEC 2024

SC-4, 28 NOV 2024 to 26 DEC 2024