

WAAS CH <b>77739</b> <b>W35A</b>	APP CRS <b>355°</b>	Rwy Idg <b>4199</b> TDZE <b>1644</b> Apt Elev <b>1644</b>
--	------------------------	---

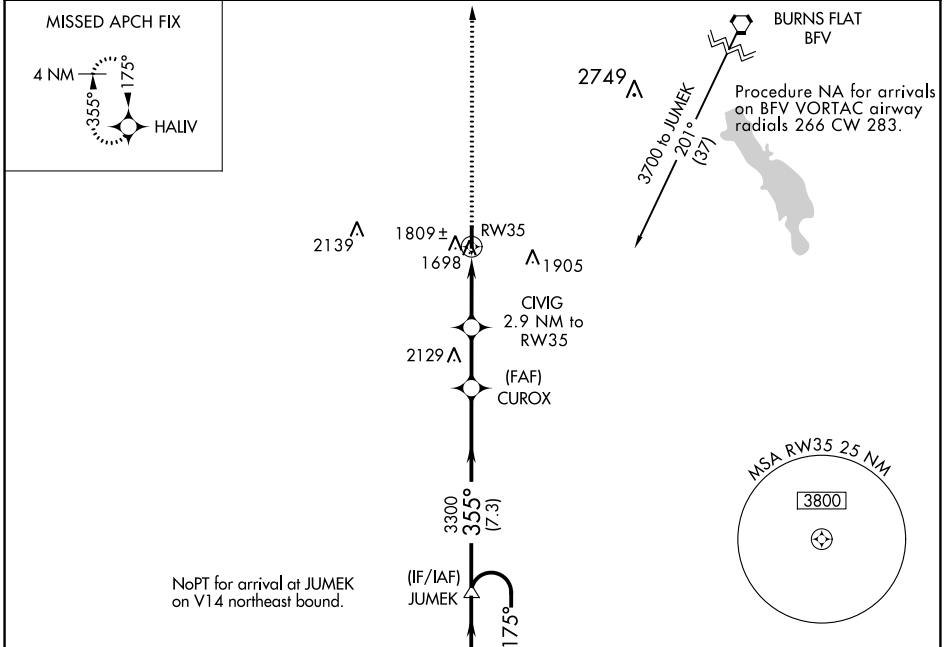
# RNAV (GPS) RWY 35

SCOTT FLD (2K4)

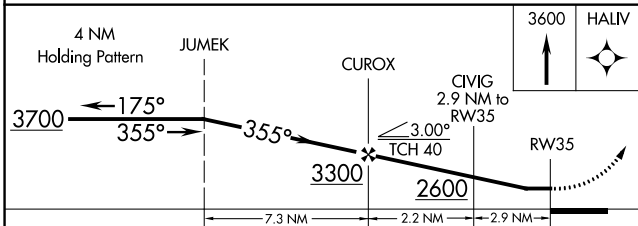
**NA** DME/DME RNP-0.3 NA. Rwy 35 helicopter visibility reduction below 3/4 SM NA. Use Altus/Quartz Mountain Rgnl altimeter setting; when not received, use Hobart altimeter setting.

MISSED APPROACH: Climb to 3600 direct HALIV and hold.

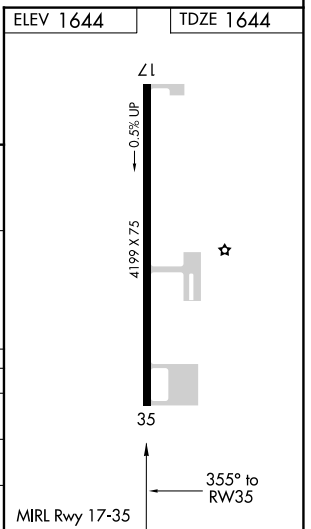
AXS AWOS-3PT <b>118.825</b>	ALTUS APP CON★ <b>125.1 353.7</b>	CTAF <b>122.9</b>
--------------------------------	--------------------------------------	----------------------



ELEV 1644	TDZE 1644
-----------	-----------



CATEGORY	A	B	C	D
LP MDA	2020-1 376 (400-1)			NA
LNAV MDA	2140-1	496 (500-1)	2140-1 3/8 496 (500-1 3/8)	NA
CIRCLING	2220-1	576 (600-1)	2340-2 696 (700-2)	NA



SC-1, 28 NOV 2024 to 26 DEC 2024

SC-1, 28 NOV 2024 to 26 DEC 2024