

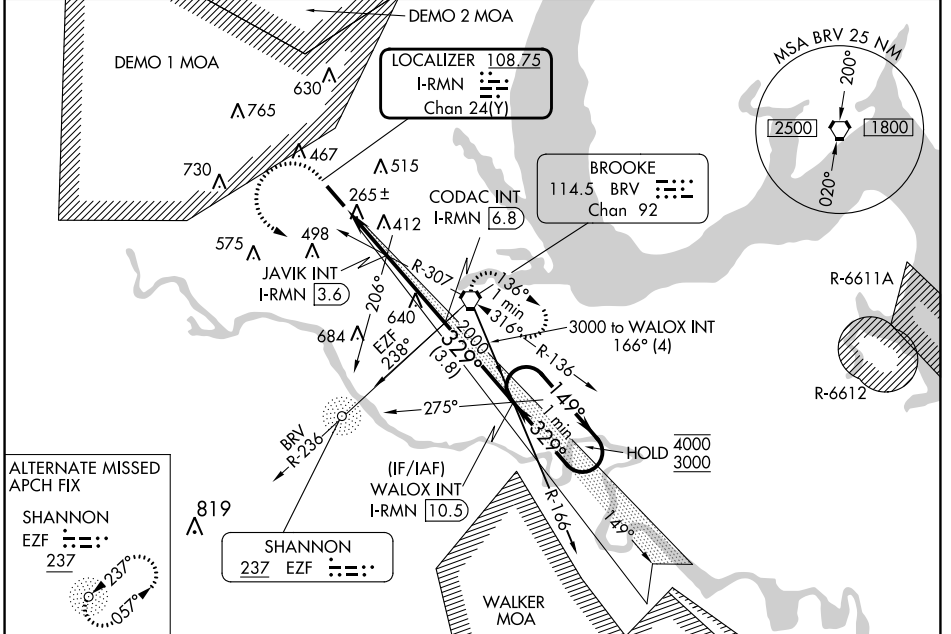
LOC/DME I-RMN	APP CRS	Rwy Idg	<b>6000</b>
<b>108.75</b>	<b>329°</b>	TDZE	<b>195</b>
Chan <b>24</b> (Y)		Apt Elev	<b>219</b>

# ILS or LOC RWY 33

STAFFORD RGNL (R.MN)

ADF or DME required.	MALS	MISSED APPROACH: Climb to 700 then climbing left turn to 2100 direct BRV VORTAC and hold, continue climb-in-hold to 2100.
Circling Rwy 15 NA at night. Inop table does not apply		

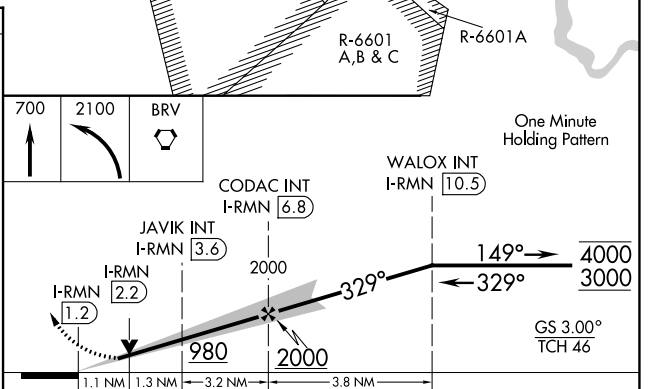
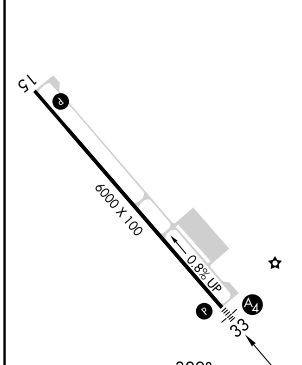
AWOS-3 <b>126.325</b>	QUANTICO APP CON★ <b>127.05 290.375</b>	GCO <b>135.075</b>	UNICOM <b>122.725</b> (CTAF)
--------------------------	--------------------------------------------	-----------------------	---------------------------------



ALTERNATE MISSED APCH FIX

SHANNON EZF 237

ELEV 219	TDZE 195
----------	----------



CATEGORY	A	B	C	D
S-ILS 33		445- <sup>3</sup> / <sub>4</sub>	250 (300- <sup>3</sup> / <sub>4</sub> )	
S-LOC 33		560- <sup>3</sup> / <sub>4</sub>	365 (400- <sup>3</sup> / <sub>4</sub> )	
CIRCLING	720-1	820-1	820-1 <sup>3</sup> / <sub>4</sub>	1040-2 <sup>3</sup> / <sub>4</sub>
	501 (600-1)	601 (700-1)	601 (700-1 <sup>3</sup> / <sub>4</sub> )	821 (900-2 <sup>3</sup> / <sub>4</sub> )

NE-3, 28 NOV 2024 to 26 DEC 2024

NE-3, 28 NOV 2024 to 26 DEC 2024