

VORTAC BRV	APP CRS	Rwy Idg TDZE	<b>6000</b>
<b>114.5</b>	<b>314°</b>	<b>196</b>	
Chan <b>92</b>		Apt Elev	<b>219</b>

# VOR RWY 33

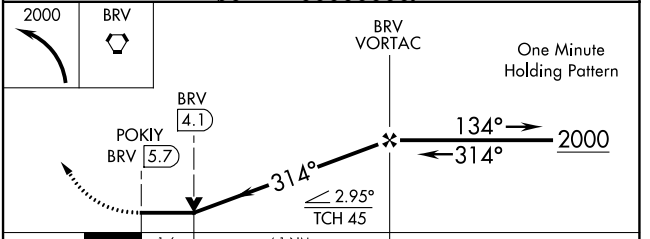
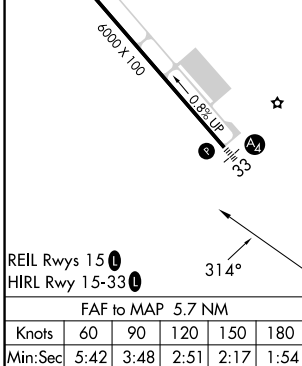
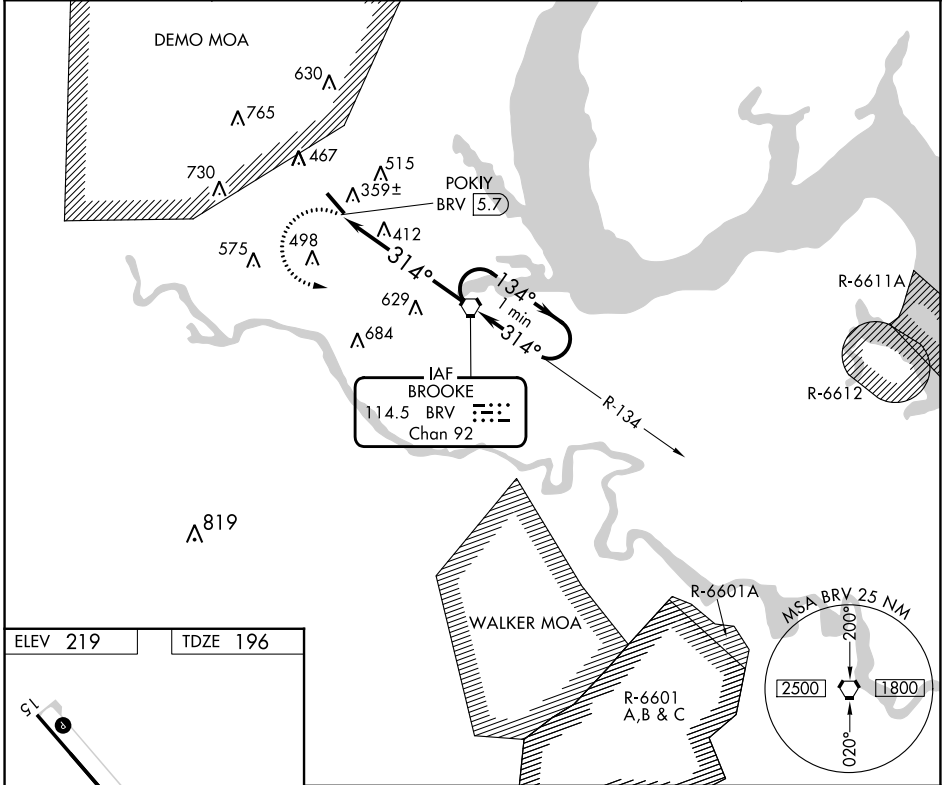
STAFFORD RGNL (R.MN)

**▼** Inoperative table does not apply to Cat C. Circling Rwy 15 NA at night.

**MALS**  


**MISSED APPROACH:** Climbing left turn to 2000 direct BRV VORTAC and hold.

AWOS-3 <b>126.325</b>	QUANTICO APP CON * <b>127.05 290.375</b>	GCO <b>135.075</b>	UNICOM <b>122.725 (CTAF) 0</b>
--------------------------	---	-----------------------	-----------------------------------



CATEGORY	A	B	C	D
S-33	740- <sup>3</sup> / <sub>4</sub> 544 (600- <sup>3</sup> / <sub>4</sub> )		740-1 <sup>1</sup> / <sub>2</sub> 544 (600-1 <sup>1</sup> / <sub>2</sub> )	740-1 <sup>3</sup> / <sub>4</sub> 544 (600-1 <sup>3</sup> / <sub>4</sub> )
CIRCLING	740-1 521 (600-1)	820-1 601 (700-1)	820-1 <sup>3</sup> / <sub>4</sub> 601 (700-1 <sup>3</sup> / <sub>4</sub> )	1040-2 <sup>3</sup> / <sub>4</sub> 821 (900-2 <sup>3</sup> / <sub>4</sub> )

NE-3, 28 NOV 2024 to 26 DEC 2024

NE-3, 28 NOV 2024 to 26 DEC 2024