

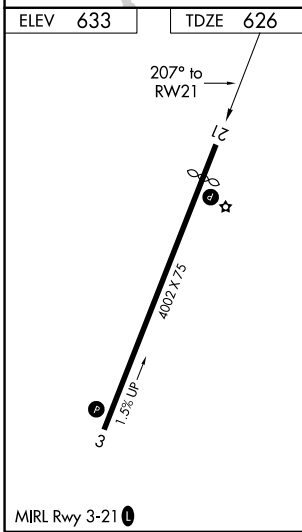
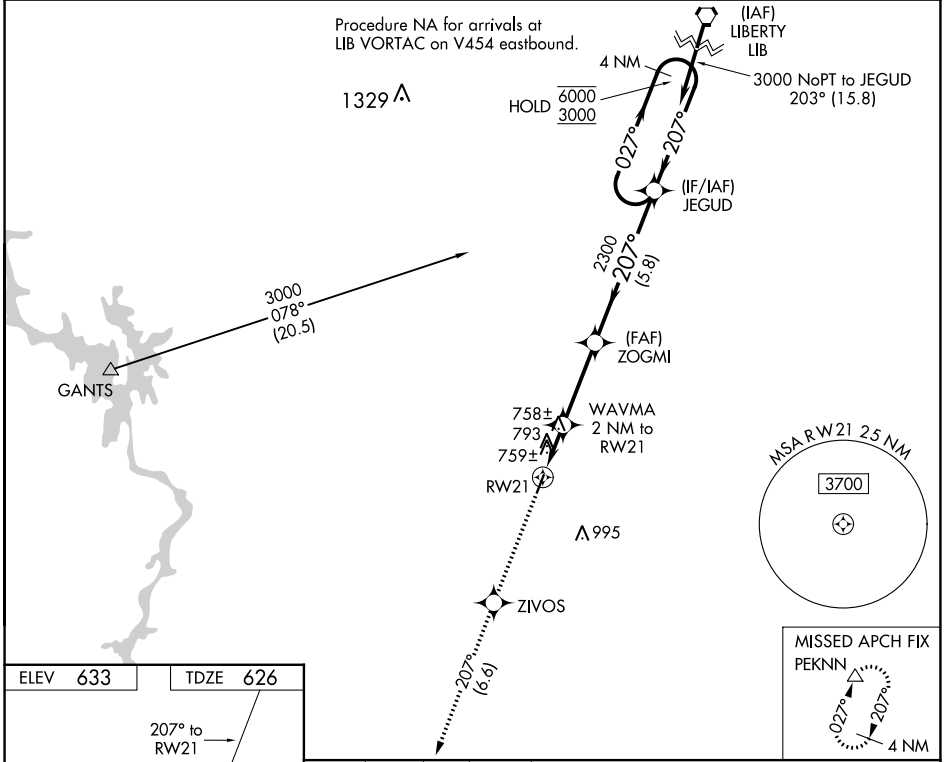
WAAS CH 72935 W21A	APP CRS 207°	Rwy Idg TDZE 626 Apt Elev 633
--	------------------------	---

RNAV (GPS) RWY 21

MONTGOMERY COUNTY (43A)

RNP APCH-GPS.
 ▼ Rwy 21 helicopter visibility reduction below 1 SM NA. Use Asheboro altimeter setting; when not received, use Albemarle altimeter setting. Procedure NA at night.
 ▲ MISSED APPROACH: Climb to 3000 direct ZIVOS and on track 207° to PEKNN and hold.

HBI AWOS-3 119.275	FAYETTEVILLE APP CON 127.8 343.725	UNICOM 122.8 (CTAF) 0
------------------------------	--	---------------------------------



3000	ZIVOS	PEKNN	Visual Segment - Obstacles.	
↑	✦	tr 207°	JEGUD	4 NM Holding Pattern
WAVMA 2 NM to RW21		ZOGMI	027° → 6000 ← 207° 3000	
RW21	1280	2300	← 207°	
← 2 NM		← 3.2 NM	← 5.8 NM	
CATEGORY	A	B	C	D
LP MDA	1060-1	434 (500-1)	NA	
LNAV MDA	1100-1	474 (500-1)	NA	
☑ CIRCLING	1240-1 607 (700-1)	1340-1 707 (800-1)	NA	

SE-2, 28 NOV 2024 to 26 DEC 2024

SE-2, 28 NOV 2024 to 26 DEC 2024