

LOUISVILLE, GEORGIA

AL-9837 (FAA)

24193

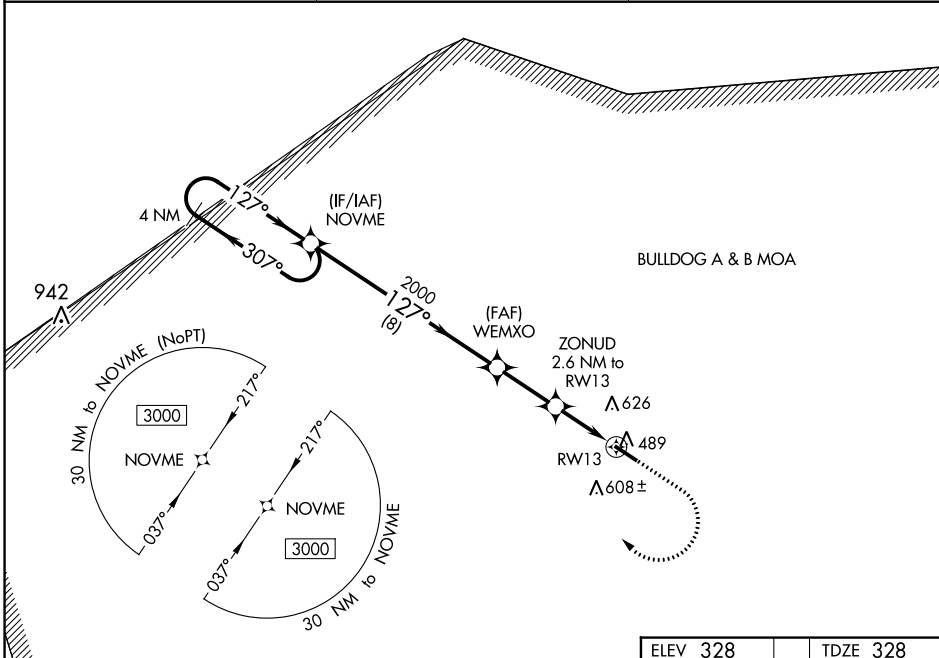
WAAS CH 56539 W13A	APP CRS 127°	Rwy Idg TDZE Apt Elev	5002 328 328
--	------------------------	-----------------------------	---

RNAV (GPS) RWY 13

LOUISVILLE MUNI (2J3)

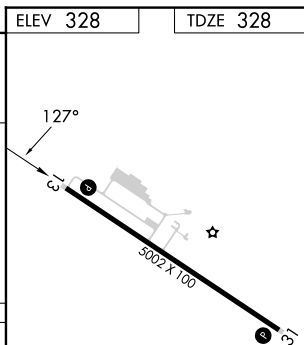
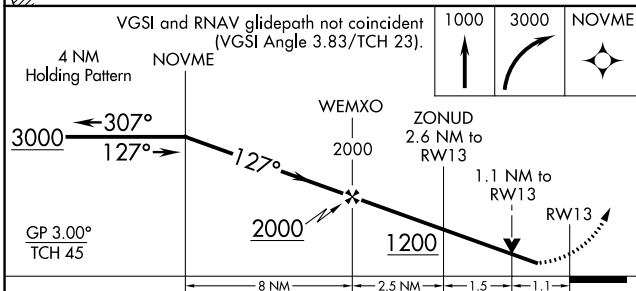
RNP APCH GPS.	MISSED APPROACH: Climb to 1000 then climbing right turn to 3000 direct NOVME and hold.
▼ For uncompensated Baro-VNAV systems, LNAV/VNAV NA below -15°C or above 54°C. Rwy 13 helicopter visibility reduction below 3/4 SM NA.	

AWOS-3PT 119.35	AUGUSTA APP CON 126.8 270.3	CTAF 122.9 0
---------------------------	---------------------------------------	------------------------



SE-4, 28 NOV 2024 to 26 DEC 2024

SE-4, 28 NOV 2024 to 26 DEC 2024



CATEGORY	A	B	C	D
LPV DA	578-1 250 (300-1)			
LNAV/VNAV DA	768-1½ 440 (500-1½)			
LNAV MDA	800-1	472 (500-1)	800-1½ 472 (500-1½)	800-1¾ 472 (500-1¾)
CIRCLING	840-1 512 (600-1)	980-1 652 (700-1)	980-1¾ 652 (700-1¾)	980-2 652 (700-2)

REIL Rwy 13 and 31 0
MIRL Rwy 13-31 0

LOUISVILLE, GEORGIA
Orig-B 10AUG23

32°59'N-82°23'W

LOUISVILLE MUNI (2J3) RNAV (GPS) RWY 13