

WAAS CH <b>99641</b> <b>W34A</b>	APP CRS <b>335°</b>	Rwy Idg <b>3300</b> TDZE <b>386</b> Apt Elev <b>386</b>
----------------------------------------	------------------------	---------------------------------------------------------------

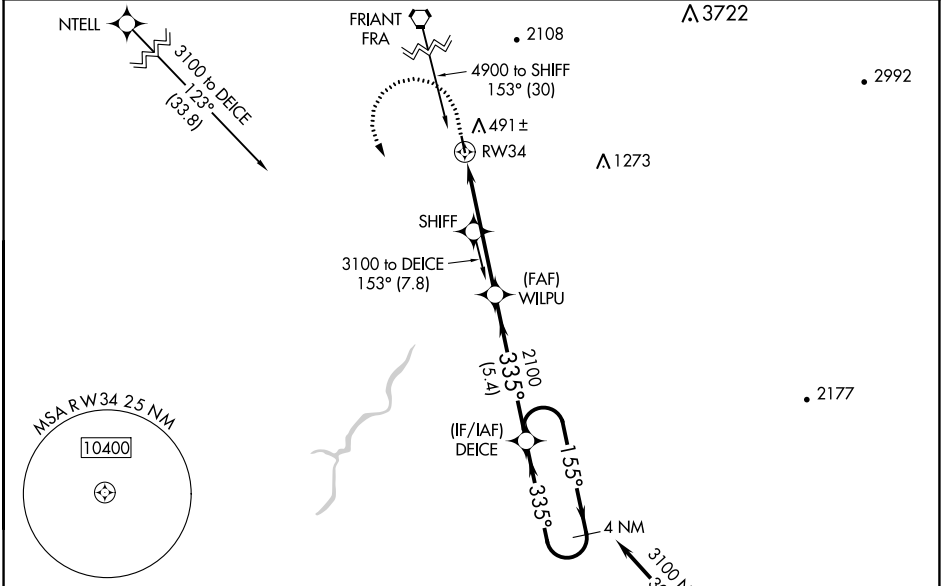
# RNAV (GPS) RWY 34

REEDLEY MUNI (O32)

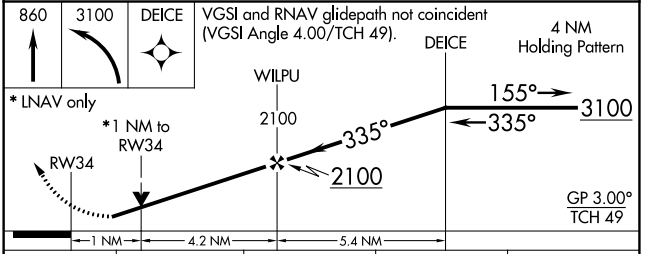
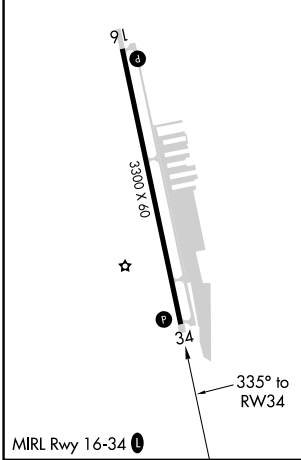
**NA** For uncompensated Baro-VNAV systems, LNAV/VNAV NA below -15°C (5°F) or above 54°C (130°F). Circling NA east of Rwy 16-34. Baro-VNAV and VDP NA when using Fresno Yosemite Intl altimeter setting. Rwy 34 helicopter visibility reduction below ¾ SM NA. DME/DME RNP-0.3 NA. When local altimeter setting not received, use Fresno Yosemite Intl altimeter setting: increase all DAs 41 feet and all visibilities ⅓ SM; increase all MDAs 60 feet.

MISSED APPROACH: Climb to 860 then climbing left turn to 3100 direct DEICE and hold, continue climb-in-hold to 3100.

AWOS-3PT <b>120.175</b>	FRESNO APP CON <b>132.35 323.25</b>	UNICOM <b>122.7 (CTAF)</b>
----------------------------	----------------------------------------	-------------------------------



ELEV 386	TDZE 386
----------	----------



CATEGORY	A	B	C	D
LPV DA	636-¾	250 (300-¾)		NA
LNAV/VNAV DA	740-1	354 (400-1)		NA
LNAV MDA	860-1	474 (500-1)		NA
<b>C</b> CIRCLING	860-1	474 (500-1)		NA

SW-2, 28 NOV 2024 to 26 DEC 2024

SW-2, 28 NOV 2024 to 26 DEC 2024