

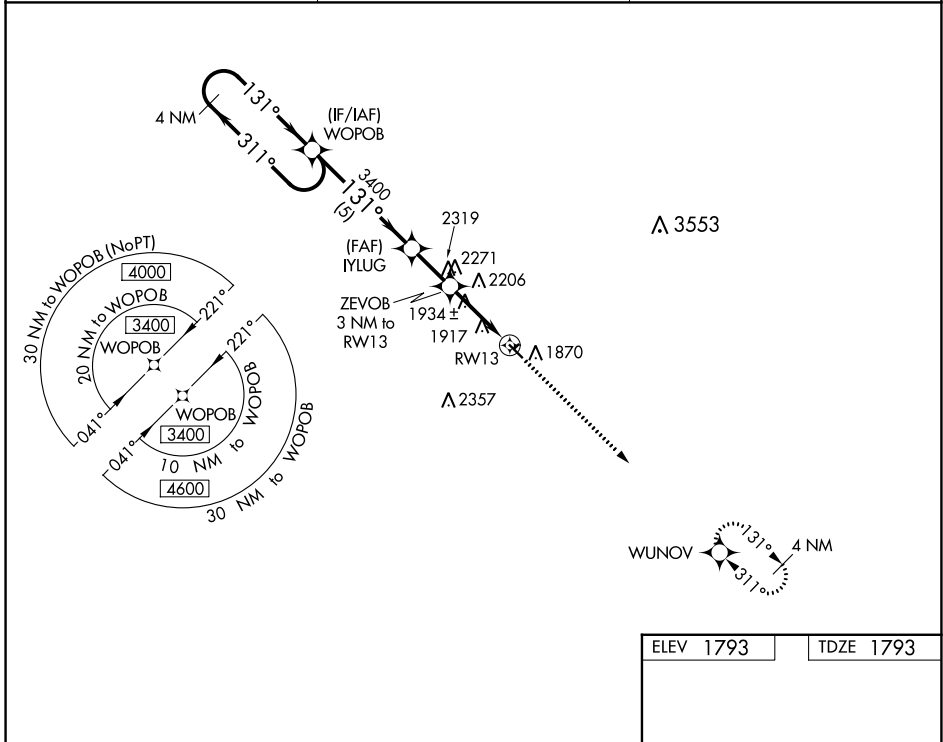
WAAS CH 58340 W13A	APP CRS 131°	Rwy Idg TDZE Apt Elev	3697 1793 1793
--	------------------------	-----------------------------	---

RNAV (GPS) RWY 13

CLARK COUNTY (8D7)

RNP APCH.	MISSED APPROACH: Climb to 3400 direct WUNOV and hold.
<p>▼ Rwy 13 helicopter visibility reduction below 3/4 SM NA. ▲ NA Use Watertown altimeter setting. Circling NA to Rwys 3 and 21.</p>	

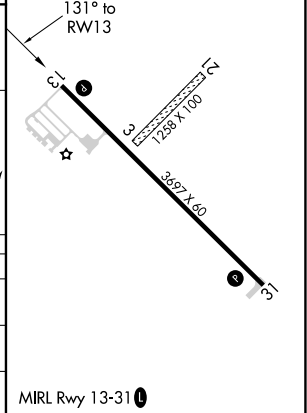
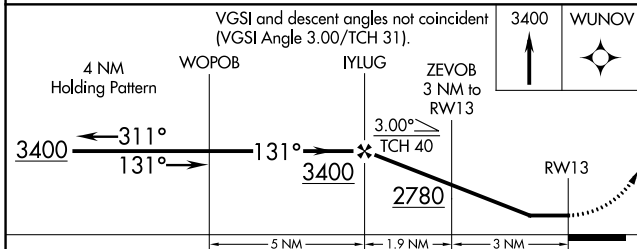
ATY ASOS 126.625	MINNEAPOLIS CENTER 128.5 306.2	UNICOM 122.8 (CTAF) 0
----------------------------	--	---------------------------------



NC-1, 28 NOV 2024 to 26 DEC 2024

NC-1, 28 NOV 2024 to 26 DEC 2024

ELEV 1793	TDZE 1793
-----------	-----------



	5 NM		1.9 NM		3 NM	
CATEGORY	A	B	C	D		
LP MDA	2260-1	467 (500-1)		NA		
LNAV MDA	2400-1	607 (700-1)		NA		
CIRCLING	2400-1	607 (700-1)		NA		