

WAAS CH <b>53622</b> <b>W23A</b>	APP CRS <b>232°</b>	Rwy ldg <b>4000</b> TDZE <b>441</b> Apt Elev <b>441</b>
--	------------------------	---

# RNAV (GPS) RWY 23

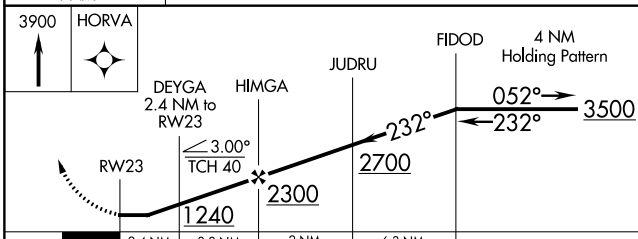
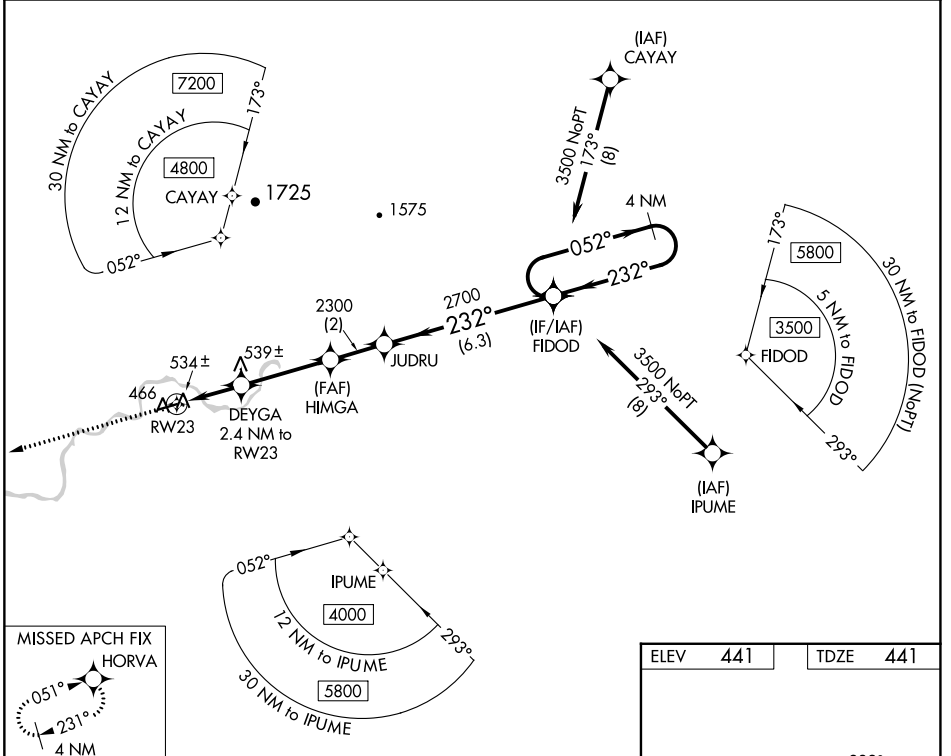
ALLAKAKET (6A8) (PFAL)

**NA**  
-44°C

DME/DME RNP-0.3 NA. Visibility reduction by helicopter below  $\frac{3}{4}$  SM NA. Use Bettes altimeter setting.

MISSED APPROACH: Climb to 3900 direct HORVA and hold, continue climb-in-hold to 3900.

BTT/PABT ASOS <b>135.45</b>	ANCHORAGE CENTER <b>124.6 352.0</b>	FAIRBANKS RADIO <b>122.2</b>	CTAF <b>122.9</b>
--------------------------------	--	---------------------------------	----------------------



ELEV <b>441</b>	TDZE <b>441</b>
MIRL Rwy 5-23	

CATEGORY	A	B	C	D
LP MDA	900-1	459 (500-1)	900-1 $\frac{3}{8}$ 459 (500-1 $\frac{3}{8}$ )	NA
LNAV MDA	900-1	459 (500-1)	900-1 $\frac{3}{8}$ 459 (500-1 $\frac{3}{8}$ )	NA
CIRCLING	1100-1 659 (700-1)	1220-1 779 (800-1)	1240-2 $\frac{1}{4}$ 799 (800-2 $\frac{1}{4}$ )	NA

AK, 31 OCT 2024 to 26 DEC 2024

AK, 31 OCT 2024 to 26 DEC 2024