

APP CRS	Rwy Idg	<b>3299</b>
<b>083°</b>	TDZE	<b>964</b>
	Apt Elev	<b>967</b>

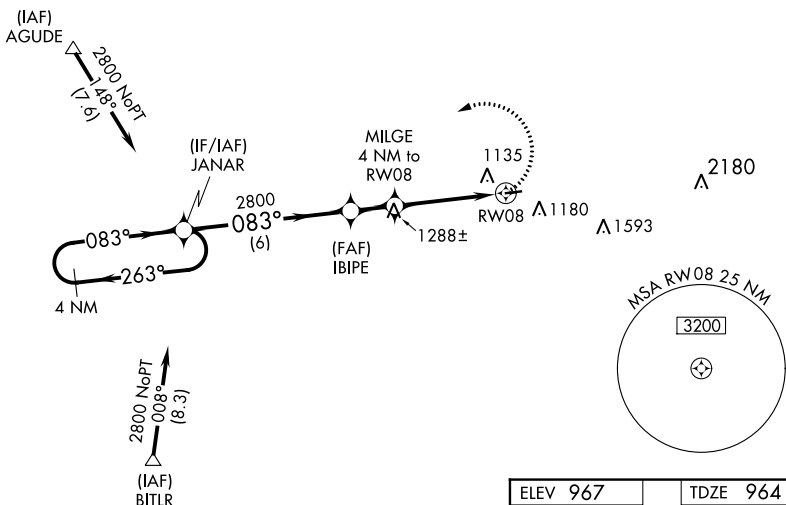
# RNAV (GPS) RWY 8

BOYCEVILLE MUNI (3T3)

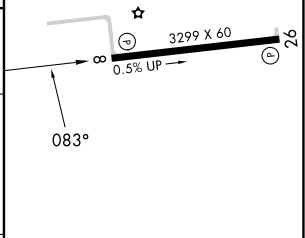
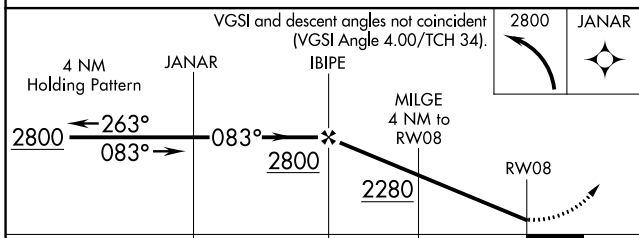
RNP APCH.	MISSED APPROACH: Climbing left turn to 2800 direct JANAR and hold.
▼ Use New Richmond Rgnl altimeter setting. ▲ NA When VGSI inop, procedure NA at night. Helicopter visibility reduction below 1 SM NA.	

RNH AWOS-3 <b>120.0</b>	MINNEAPOLIS CENTER <b>125.3 335.6</b>	UNICOM <b>122.8 (CTAF) 0</b>
----------------------------	--	---------------------------------

Procedure NA for arrivals at AGUDE via V78 westbound.



ELEV 967	TDZE 964
----------	----------



CATEGORY	A	B	C	D
LNAV MDA	1580-1	616 (700-1)	1580-1¾ 616 (700-1¾)	NA

MIRL Rwy 8-26 0  
REIL Rwy 26 0

EC-3, 28 NOV 2024 to 26 DEC 2024

EC-3, 28 NOV 2024 to 26 DEC 2024