

APP CRS	Rwy Idg	N/A
066°	TDZE	N/A
	Apt Elev	654

RNAV (GPS)-A

HARRIMAN-AND-WEST (A/QW)



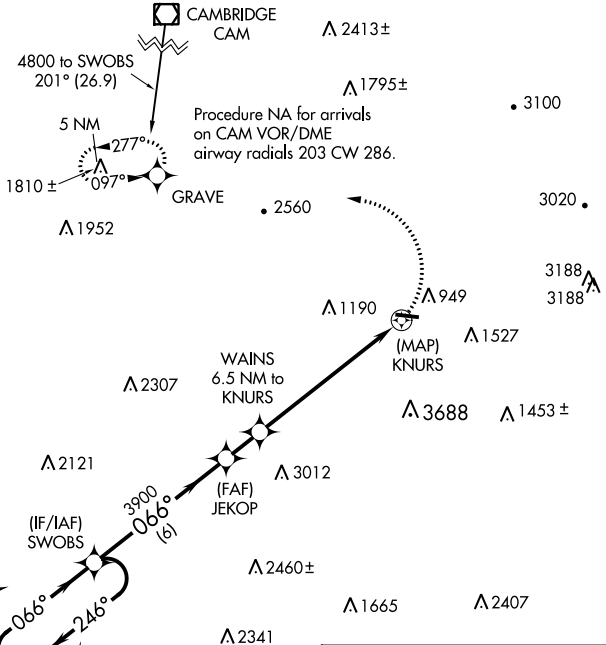
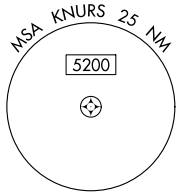
When local altimeter setting not received, use Bennington altimeter setting and increase all MDA 60 feet. Circling NA south of Rwy 11-29. DME/DME RNP-0.3 NA. Procedure NA at night.

MISSED APPROACH: Climbing left turn to 5000 direct GRAVE and hold, continue climb-in-hold to 5000.

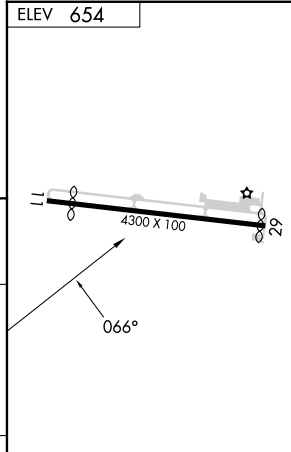
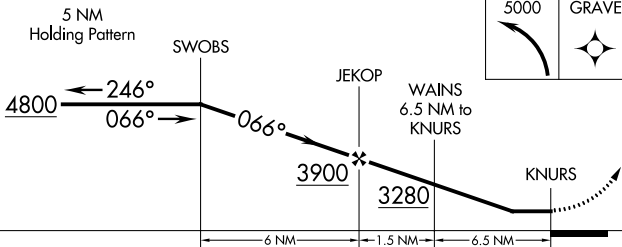
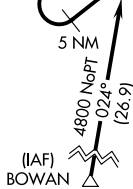
ASOS
134.775

ALBANY APP CON
132.825 307.2

UNICOM
122.8 (CTAF)



Procedure NA for arrivals at BOWAN on V487 southbound and V292/T295 westbound.



CATEGORY	A	B	C	D
C CIRCLING	2740-1¼ 2086 (2100-1¼)	2740-1½ 2086 (2100-1½)	2780-3 2126 (2200-3)	NA

MIRL Rwy 11-29

NE-1, 28 NOV 2024 to 26 DEC 2024

NE-1, 28 NOV 2024 to 26 DEC 2024