

APP CRS <b>216°</b>	Rwy Idg TDZE Apt Elev	<b>3500</b> <b>545</b> <b>549</b>
------------------------	-----------------------------	---

# RNAV (GPS) RWY 22

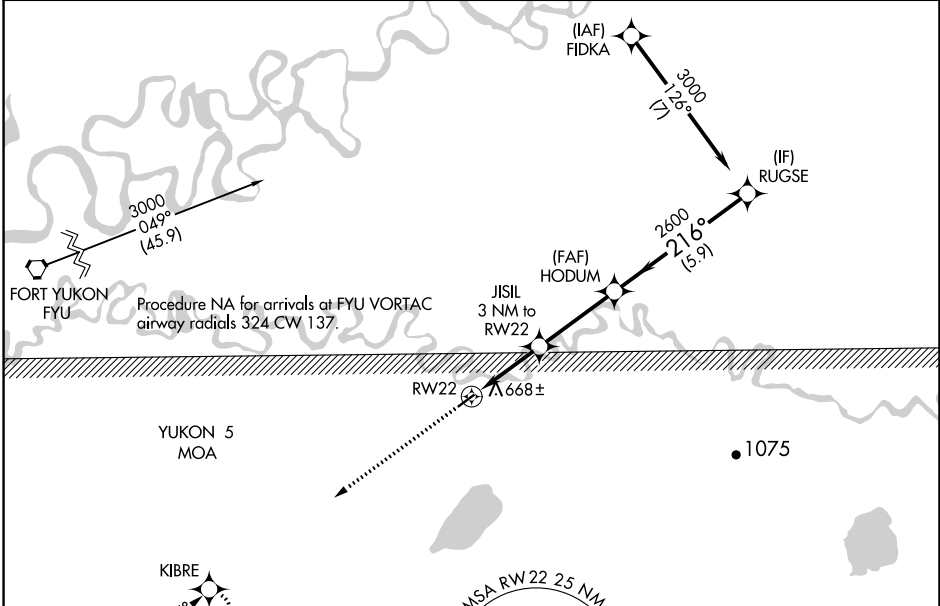
CHALKYITSIK (CIK) (PACI)

RNP APCH.

▼ Procedure NA at night.  
 ▲ NA Rwy 22 helicopter visibility reduction below 1 SM NA.  
 Use Fort Yukon altimeter setting.

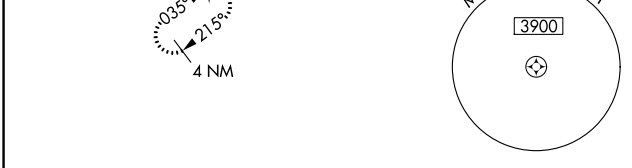
MISSED APPROACH: Climb to 3000 direct KIBRE and hold.

FYU/PFYU AWOS-3P <b>125.8</b>	ANCHORAGE CENTER <b>135.0 225.4</b>	CTAF <b>122.9</b>
----------------------------------	--	----------------------

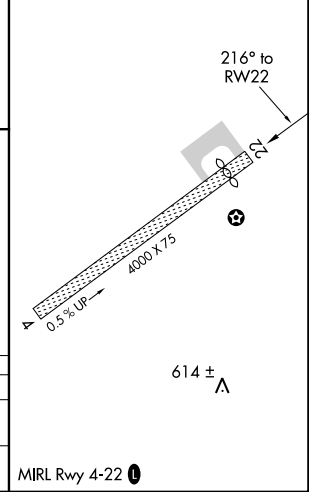
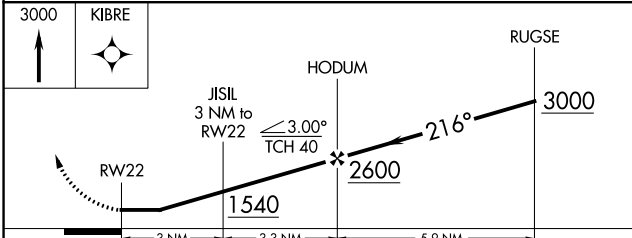


AK, 31 OCT 2024 to 26 DEC 2024

AK, 31 OCT 2024 to 26 DEC 2024



ELEV 549	TDZE 545
----------	----------



CATEGORY	A	B	C	D
LNVA MDA	1020-1	475 (500-1)	1020-1 <sup>3</sup> / <sub>4</sub>	475 (500-1 <sup>3</sup> / <sub>4</sub> )
CIRCLING	1080-1 531 (600-1)	1160-1 611 (700-1)	1200-1 <sup>3</sup> / <sub>4</sub> 651 (700-1 <sup>3</sup> / <sub>4</sub> )	1360-2 <sup>3</sup> / <sub>4</sub> 811 (900-2 <sup>3</sup> / <sub>4</sub> )

MIRL Rwy 4-22