

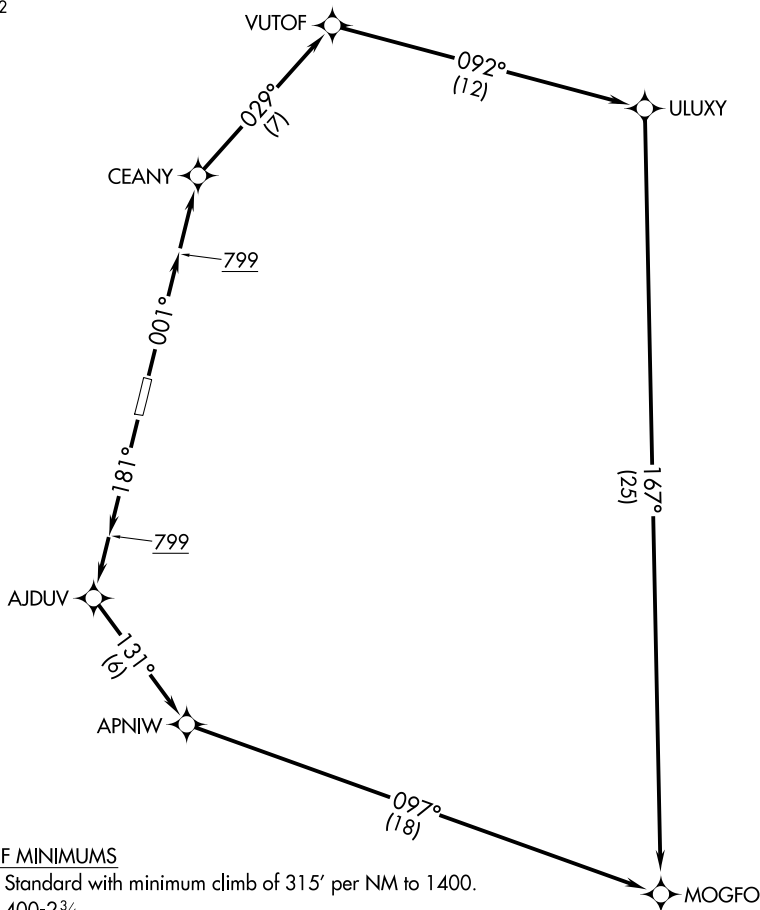
(HUGHE1.MOGFO) 21336

AL-10156 (FAA)

HUGHES (HUS)(PAHU)
HUGHES, ALASKA

HUGHES ONE DEPARTURE (OBSTACLE) (RNAV)

ANCHORAGE CENTER
124.6 352



TAKEOFF MINIMUMS

Rwy 18: Standard with minimum climb of 315' per NM to 1400.

Rwy 36: 400-2¾.

NOTE: RNAV 1.

NOTE: GPS required.

NOTE: Procedure NA at night.

NOTE: Chart not to scale.

(NOTES CONTINUED ON FOLLOWING PAGE)

DEPARTURE ROUTE DESCRIPTION

TAKEOFF RUNWAY 18: Climb on heading 181° to 799, then direct AJDUV, then on track 131° to APNIW, then on track 097° to MOGFO, cross MOGFO at or above MEA/MCA for assigned route of flight.

TAKEOFF RUNWAY 36: Climb on heading 001° to 799, then direct CEANY, then on track 029° to VUTOF, then on track 092° to ULUXY, then on track 167° to MOGFO, cross MOGFO at or above MEA/MCA for assigned route of flight.

HUGHES ONE DEPARTURE (OBSTACLE) (RNAV)

(HUGHE1.MOGFO) 02DEC21

HUGHES, ALASKA
HUGHES (HUS)(PAHU)

AK, 31 OCT 2024 to 26 DEC 2024

AK, 31 OCT 2024 to 26 DEC 2024